

PREFACE

The 2018 yearly book report was published by Pattaya City to publicize information in various aspects of Pattaya City comprising of infrastructure aspect, economic aspect, social aspect, natural resources and environment aspect and politic and administration of Pattaya City.

Pattaya City sincerely thanks other government agencies, state enterprises, and every related work unit for providing information to publish this book. Pattaya City highly expects that this book will be beneficial for interesting person to take this book as a reference in studying and doing researches.

Publishing Staff

Research and Evaluation Section

Strategic Development Unit

Strategy and Budgeting Department

Pattaya City

Official Logo of Pattaya City



The Official Logo of Pattaya City is the circle with the size of 5 centimeters diameter. There is an ancient Thai warrior who fought against the Burmese Army making the way to southeast and having a rest at Pattaya. There is also the picture of Pattaya Sea and Beach with the words upward saying “Muang Pattaya and the downward saying “Chonburi Province”.

Announced in the government gazette, copy 104, part 169, pages 244

Dated on 27 August 1987

The King’s Oath Symbol

Royal Decree
Special Development of Eastern Area
2018

His Majesty King Maha Vajiralongkorn Bodindradebayavangkun.

Issued on 10 May 2018

The third year of this present King

King Mahavachiralongkorn Bordintepayawarangkool has his demand to announce that:

There should be the law for the special development of eastern area.

This Royal Decree consists of the regulations dealing with the limitation of the right and freedom of a person that mentioned in Act 26 together with Act 34, and Act 37 of the constitution of the Kingdom of Thailand which allows to be able to take action under the power of regulations and laws.

The reason and necessity for limiting the right and freedom of a person under this Act is for developing the eastern area systematically responding to the principle of sustainable development, especially to promote commercial and industrial engagement that utilizes high and modern technology, create innovation and be friendly to environment. The legislation of this ACT gets along with the condition mentioned in Section 26 of the constitution of Thailand.

Section 1. This Act Royal Decree is called “The Royal Decree of Special Development Area for the Eastern Part 2018.

Section 2. This Royal Decree is effective after the day of the announcement in the government gazette.

Section 3. To terminate:

(1) The command of the National Peace Keeping Council No. 2/2017 on the Special Eastern Economic Development Corridor dated 17 January 2017.

(2) The command of the National Peace Keeping Council No. 28/2017 on the increasing measurement of effectiveness of Special Eastern Economic Development Corridor dated on 26 May 2017.

(3) The command of the National Peace Keeping Council No.47/2017 on the limitation of using the land in the Special Eastern Economic Development Corridor dated 25 October 2017.

Section 4. In this Royal Decree:

“The Special Eastern Economic Development Corridor” means the area in Section 6.

“The Promotion of Special Economic Area” means the area within The Eastern Corridor Special Economic Development Area as announced by the committee in Section 6.

“The entrepreneur in The Promotion of Special Economic Area” means the entrepreneur as a legal entity or other people who have special ability allowed by the permanent secretary as mentioned in the regulations fixed by the committee to do industrial business response to the demand of the goal of Special Economic Development Area.

“Special Purposive Industry” means the industry the policy committee mentioned in Section 39.

“Purposive Industry” means the purposive industry as mentioned in the law to add the capability of the country to compete in the purposive industry.

“The Policy Committee” means the committee of The Special Eastern Economic Development Area.

“The Office” means the office of the committee of The Special Eastern Economic Development Area.

“Permanent Secretary” the permanent of the Special Eastern Economic Development Area.

“Government Units” means the government agents, state enterprises, local administration organization, public organization or other government units.

“Fund” means the fund for the Special Eastern Economic Development Area.

Section 5 The Prime Minister is in charge of this Royal Decree.

Part 1
General Chapter

Section 6 The area in Chachoengsao, Chonburi and Rayong and others that are in the eastern part fixed and added by this Royal Decree are the Special Eastern Economic Development Area to serve the following purposes.

(1) Develop modern economical activities that are friendly to environment to increase the ability to compete of the country.

(2) Organize one stop services of the government sectors to reduce cost in doing business.

(3) Build up effective infrastructure and public utility with continuity and they easy for people to access and perfectly link to each other.

(4) Limit the use of the land properly and fit for the condition and potential of the land responding to land sustainable development.

(5) Develop cities to be modern as international class suitable for convenient and safe living, easy to access for all and do business with quality.

In case of necessity to get benefit in running the project to meet the purpose (3), there will be the legislation of the Royal Decree to make some parts of the connected area as mentioned in the space 1 and the area which is necessary for running the project might also be declared to be the Special Eastern Economic Development Area.

Notice: The reason to declare this Royal Decree is that the eastern part is the area with the high economical potential. If there is a continuous and systematic area development responding to the sustainable development principle, there will really be the proper use of the land and it will help increasing the capability to compete of the country, especially the encouragement of commercial and industrial business with modern and high technology, creativity, friendliness of environment and previous agriculture, and ways of life of the people in the area. However, the issued laws do not response to this development and there is no plan to administrate the land as a whole unit and made the development of the area scattered. The result of unintegrated development made the development of the eastern part facing less potential and the management of the basic public utility of the

government sectors hasn't been continued and connected. Therefore, it is appropriate to limit the eastern part to be the Special Eastern Economic Development Area. There is a clear plan of utilizing the land suitable for the potential of the area and response to the principle of sustainable development. Moreover, the basic public utility will be connected through the area and the city will be modernized as an international class suitable for doing business and living, the services of government units will be centered as a completed network, including the definite right and benefit will be offered to ones who are entrepreneurs in the area. These are the necessity to launch this Royal Decree.

The Four-year Development Plan (2018 – 2021) of Pattaya City

Visions of Pattaya City

“The City of Standard Tourism Economic, Sustainability and Being Habitable”

Missions

1. Develop the city to be livable and sustainable covering economics, society, infrastructure and environment.
2. Reinforce the competency of Pattaya City to be a tourism economical city with standard to become the linkage of the region.
3. Develop human resource potential and quality of life of the locals with participatory and fairness.

Objectives

1. To create standard and safety satisfaction of the city in order to take economic benefits from tourists, visitors and investors into the city continuously.
2. To make Pattaya City occupy running-on development, balance and coherence with demands of every section.

3. To prepare readiness of Pattaya City in all dimensions to gain capability of becoming the city center of the development in the eastern part of Thailand.

4. To develop human resource in Pattaya City area to have a high quality in order to become a part of sustainable development process, have good quality of life and stable income and earning life and obtain the spread benefits equally and justly.

5. To develop the organization of Pattaya City to become the organization with high quality and performance and be able to administrate and manage the metropolitan as the center of the eastern part and be able to respond the demand of a huge number of tourists and visitors with different cultures.

Goals

1. Citizens, visitors and investors obtain comfort, convenience and reliability on security together with good quality of public utility, public services and good environment.

2. Pattaya city has sustainable development as follows:

2.1 Work units, organizations, institutions and local government units relating to Pattaya City have integration along the area and the linkage area development.

2.2 There is a participation process in setting up development direction and there are strong controlling and following up.

3. Pattaya City becomes the city center of the region.

4. Pattaya is the international standard tourist attraction.

5. Every citizen of Pattaya City together with related persons have good quality of Life and obtain potential development continuously to support sustainable city development equally.

6. Pattaya City becomes the high performance organization.

Strategies and Paths of City Development

Strategy 1. To create the potential of Pattaya City to support sustainable development of the livable city of everyone.

Path of Development / Strategy

- 1.1 Promote constructing necessary infrastructure for city growth and development.
- 1.2 Develop the potential of supporting the increasing traffic in the future.
- 1.3 Promote the reliability focusing on safety and peace in every aspect.
- 1.4 Develop the competency to manage pollutions or the side effects of city development and tourism (water pollution, air pollution, waste and scenery) to be low carbon city.
- 1.5 Increase the potential to support the growing tourism and tourist attractions.
- 1.6 Strengthen participation process of developing the city and city plan.

Strategy 2. To develop Pattaya City to become the world class city of tourism economic and the metropolitan of the region.

Path of Development / Strategy

- 2.1 Speed up the development process to make Pattaya city be a smart city.
- 2.2 Create various tourism activities that can give tourists more new experience.
- 2.3 Encourage organizing leisure activities and land, water and aero sports.
- 2.4 Build up the image of Pattaya City as the tourist attraction, a place for organizing conferences, accommodation, the medical hub, or the place of world class investment.
- 2.5 Publicize the right fame and importance of Pattaya City to Thai society.

Strategy 3. To develop human resources and promote the local people's quality of life continuously.

Path of Development / Strategy

- 3.1 Encourage the education form of the youths right to the way of development.
- 3.2 The population of Pattaya City in all ages are developed to meet quality of life, potential, work skills and chances for having jobs and the distribution of

incomes will be done towards all ranges of ages.

- 3.3 Promote quality of health of people and tourists including the good hygiene of the area.
- 3.4 Prevent and Protect local people, tourists from problems of epidemics, new diseases, and reoccurred diseases.
- 3.5 Promote the strength of consumers' protection.
- 3.6 Promote and conserve customs and traditions, religion, culture, sense of relationship towards Pattaya City including realizing towards consciousness and duty of good citizen.
- 3.7 Increase the effectiveness of servicing system, control and protect epidemic diseases caused by pets and homeless animals.

Strategy 4. To create the integration of development among work sections, organizations and local organizations.

Path of Development / Strategy

- 4.1 Strengthen the cooperation among central government agencies, and both domestic and overseas organizations dealing with development, namely, the cooperation between Pataya City and central government agencies, Pataya City and organizations or large companies for sustainable development and Pattaya City and overseas organizations.
- 4.2 Strengthen “Pattaya Team” to create integration of full area management.
- 4.3 Coordinate and support the development of local administration organizations through the local development organization.
- 4.4 Promote group gathering, role and cooperation process of communities, clubs, associations, organizations, and networks in cooperative development and problem management.

Strategy 5. To create the potential of Pattaya City to be metropolitan management and the center of the region.

Path of Development / Strategy

- 5.1 Improve the administration structure of personnel, roles and duties, and become more independent to be suitable for metropolitan management.

- 5.2 Develop the revenue collection and earning income systems to be sufficient for Pattaya City management. (Investing with private sectors, increase efficiency / path of revenue collection, non-registered population and commercial registering)
- 5.3 Strengthen the service system of Pattaya City continuously.
- 5.4 Develop the competency of Pattaya City personnel continuously, especially in the aspects of language capability, laws, checking and following up projects, environment / pollution, public relation, negotiation, and etc.
- 5.5 Develop and balance working life quality of the personnel of Pattaya City. (Work life balance)
- 5.6 Develop the work follow-up and assessment mechanism of job performance focusing on the achievement together with the job management under good governance.
- 5.7 Strength data and statistics collecting process and the research for city administration and management.

The History of Pattaya City

The word “Pattaya” has a background history told that two months before the fall of the former capital, Ayudhaya, Phraya Tark (Sin) was Praya Kampaengpet at that time considered that if Ayudhaya fought against Burmese army weakly, it would be defeated soon, so he decided to escape from the city to form the new troop. He collected 500 men moving from Wat Pichai Army Camp heading to the southeast. On his way, he and his men fought against Burmese soldiers pursuing his troop for four times. Then he arrived in Chonburi and took a rest in front of Wat Yai Indaram (the present name). Next, he moved towards Chantaburi and had a rest during the route at Barn Norng Pai (located behind the present Pattaya Police Station beside Sukumvit Road now), Naklua Sub-district, Banglamung District. The Royal Annals by Royal writing recorded that “By this time there was a local leader named Nai Klom trying to obstruct him. When the two met face to face, Nai Klom was impressed by Phraya Tark's dignified manner and his army's strict discipline. He surrendered without a fight and joined his force. Nai Klom and 10,000 men of his force went forward and took a rest at a place for a night and then moved to Jomtian and Tung Kai Tia, Sattahip.

The place the two armies confronted each other was later known as "Thap Phraya", which means the "the army of the Phraya". Later on, this place turned to be Pattaya, the name represented the wind blowing from the southwest to the northeast at the beginning of the rainy season.

Previously, Pattaya was a small fishing village until the 1960s. Then, during Vietnam War, American army officers began arriving at Pattaya on R&R (rest and relaxation). Pattaya was developed into a popular beach resort with rapid growth and great expansion. It attracts over 4 million visitors coming to Pattaya each year (Tourism Authority of Thailand News Room, 2010). Fishers' huts along the beach were replaced by resort hotels and retail stores, including Asia's largest beachfront shopping mall (Retail Asia Online, 2011), the Central Festival Pattaya Beach Mall and a hotel (Hilton) on Beach Road in central Pattaya.

Formerly, Pattaya was the sanitation unit as Naklua Sanitation founded in 1956 with the area only Naklua Sub-district and then expanded covering South Pattaya in 1994 with the total area of 22.2 km².

Because of the rapid growth of Pattaya becoming as one of the most famous tourist attractions among Thai and foreign tourists, the form of sanitation unit could not govern Pattaya properly, the government launched 1978 Pattaya City Administration Act. And this caused the abolition of Naklua Sanitation Unit and made Pattaya City has become the special local government unit similar to the metropolitan status. When 1997 Thai Constitution was active, it mandated that the local administrator and the local council were from election. This made 1978 Pattaya City Administration Act be terminated and the new 1999 Pattaya City Administration Act was launched and has been effective since 1999.

Potential of Pattaya City

Pattaya City belongs to special features that are different from any other city in many ways. This can be an advantage to facilitate the adoption of a key factor to develop the local economic, social and political management. This highlights the potential advantages of the city as follows.

1. Pattaya is famous for its natural city known by both Thai and foreigners. The city also has the sandy beach with 15 kilometers long.
2. Pattaya is well-known as the hub of economic, banking, business and commercial services of the East Region.
3. Pattaya is well-known as the center of services and tourism business for the Eastern Coastal Area Development Project. (Eastern Seaboard)
4. Pattaya is the center of regional transportation and telecommunication.
5. Pattaya is the center of all educational level.
6. Pattaya is well-known as a city with a rich infrastructure favorable to the production of investment and tourism.
7. Pattaya is well-known as a city with efficiency towards wastewater treatment plant and garbage disposal.
8. Pattaya is well-known as the city of which its public services can be a good leader model, along the transparency and people participation.
9. Pattaya is well-known as the city center for domestic and international land and water sports events.

General Information of Pattaya City

Physical Features

◇ Location

Pattaya City is located at 171 Moo 6, North Pattaya Road, Naklua, Banglamung District, Chonburi Province 20150 in the eastern part of Thailand at the latitude of 13 Northern Degree and the longitude of 101 Eastern Degree in Banlamung District, Chonburi Province. It is approximately 150 kilometers far from Bangkok.

◇ Boundary

The north. It begins from Katinglai Canal close to the border of Banglamung Municipality and the border of Norngplalai Municipality.

The south. The border of this direction is closed to the border of Huay-yai Municipality and Najormtain Municipality.

The east. The border is parallel along Sukumvit Road (900 meters far from Sukumvit Road to the east)

The west. The border is parallel along the sea of the Gulf of Thailand.

◇ Area

The whole area of Pattaya City is 208.10 square kilometers (130,062.50 Rai). The area is separated into three parts as follows:

- Land (including Koa Larn) 53.44 km² (33,400 Rai)
- Marine area 154.66 km² (96,662.50 Rai)
- Koa Larn 4.07 km² (2,543.75 Rai)

The area of Pattaya City comprises of 4 sub-districts as follows:

1. Naklua Sub-district with Moo 1, 2, 3, 4, 5, 6 and 7 (Koa Larn)
2. Norngprue Sub-district with Moo 5, 6, 9, 10, 11, 12 and 13
3. Huay-yai Sub-district with Moo 4 (some parts)
4. Norngplalai Sub-district with Moo 6, 7, and 8 (some parts)

Pattaya Beach is 15 kilometers long along the coast.

Physical Geography of Pattaya City

Pattaya City is situated in Banglamung District and most of the area occupies Nongprue Sub-district and Naklua Sub-district including some parts of Huay-yai Sub-district and Nongplalai Sub-district.

The feature of the land is a slope land with a small plain area. The most important part of the plain area is the location of commercial and trading center. The resident area is next to the north of Pattaya Beach surrounded with small hill with the height of 35 meters at the middle sea level. Most of the plain area is in Naklua Sub-district which is the location of community center. The below plain area is along the beach 1 kilometer far from the sea shore. Accordingly, the small slope hill and the plain area features cause small natural water ways that is sometimes dry in summer. Besides, there are some parts of the areas under being governed by Pattaya City, namely Koa Larn, Koa Krok and Koa Sark which are about 8 kilometers far from the shore.

Ecological Feature

The ecological feature of the area of Pattaya City comprises of types of stones can be described as followed:

1. Alluvium and river gravel. This area was formed by soil and gravel left by flowing water ways by the time of Quaternary until the present time. This area is found in the north of Pattaya City area.
2. Granite and Granodiorite. This is igneous rock formed in the time of Triassic that is generally found near the coast.
3. Granite. This is also igneous rock found in the time of Carboniferous found in the west of Pattaya City lying along Sukumvit Road.

Climate

The Climate in Pattaya City is influenced by two types of monsoon regularly blowing in two seasons, namely, Northeast Monsoon blowing covering the area in the cool season beginning from the middle of October to February bringing the cool wind and moderate waves and Southwest Monsoon blowing covering the area during the rainy season from the middle of May to the middle of October bringing much rain, strong wind and big waves.

Seasons. The season is separated into 3 seasons according to the climate condition in Thailand as follows:

Cool Season. This season begins from the middle of October to the middle of February influenced by the air pressure that is cold and dry from China. However, Pattaya City is located at the lower latitude far from the center of high air pressure, and the location of Pattaya City is also near the sea coast, so this makes the cold weather decline.

Summer. This season begins when the Northeast Monsoon finishes beginning for the middle of February to the middle of May with the wind from the south and northeastern regularly blowing covering the area. Nevertheless, the weather in Pattaya City is not too hot as there is the wind from the sea blowing to reduce the heat] but there is a strong wind and big waves in the afternoon and in the evening.

Rainy Season. This season begins from the middle of May to the middle of October by the time of the southwest blowing covering Thailand bringing the damp from the Andaman Sea to the Gulf of Thailand. In the beginning of the season, there is a thunder storm and this declines in June. There is much rain during August, September and October and it is obvious that the reduction of the rain is in November and this signals that the rainy season ends.

Temperature. The climate in Pattaya City does not change so much because it is located on the seacoast in the eastern part of Thailand. The highest temperature was 37.3 C° recorded on 17 March 1991 and the lowest temperature was 14.6 C° recorded on 24 December 1999. The area that has the least amount of rain, below 1,200 mm. of Pattaya City is the area of Banglamung District.

In 2017 the average highest temperature was 34.80 Degree Celsius (April 2017) and the average lowest was 17.00 Degree Celsius (December 2017). The average highest relative humidity was 90.29% (May 2017) and the average lowest relative humidity was 77.68% (December 2017). The average highest rainfall was 347.40 mm. (October 2017) and the average lowest rainfall was 10.60 mm. (June 2017).

Source: Chonburi Meteorology Station (Pattaya)

February 2018

The Monthly Record of Rainfall, Temperature and Relative Humidity in 2017

Month	Total Rainfall	Number of days of the rainfall	Temperature (Celsius)		Relative Humidity (%)
	(Millimeter)		Lowest	Highest	Average
January	94.50	8	27.30	32.00	79.74
February	29.70	3	22.30	33.6.0	79.50
March	43.00	5	23.90	33.30	87.39
April	84.60	5	24.30	34.80	86.27
May	135.60	19	24.00	34.30	90.29
June	10.60	7	25.50	34.20	79.50
July	203.30	15	22.50	33.10	83.68
August	118.20	9	24.00	32.50	86.39
September	140.80	12	24.00	33.30	97.73
October	347.40	17	23.00	32.40	88.81
November	72.50	9	22.70	31.80	82.23
December	29.80	3	17.00	32.20	77.68
Total	1,310.00	112	Average 22.90	Average 33.10	Average 84.10

Source : Chonburi Meteorology Station (Pattaya) : February 2018

Infrastructure Aspect

Infrastructure Aspect

1. Transportation System

There are 388 roads in Pattaya City area as follows:

- | | |
|------------------------|-----|
| - Macadamized Road | 28 |
| - Concrete Road | 360 |
| - Fly Over Walking Way | 8 |

Source : Maintenance Section, Office of Mechanic, Pattaya City

Intercity Transportation

As Pattaya City is an important tourist attraction of the eastern part and the country, so the way to transport from other places to Pattaya City must be done conveniently and rapidly. The important transportations are as follows:

1.1 Automobile Transportation

Pattaya City can be easily accessed from Bangkok within 2 hours. The most convenient route to Pattaya City is Motorway No. 7 that can be reach Pattaya City from Suwanabhumi Airport within 1 hour and 30 minutes. Moreover, Sukumvit Road (National Highway No. 3) lining along the eastern seacoast is the main road to North Pattaya at the kilometer post 145 – 146 and South Pattaya at the kilometer post 147. Sukumvit Road is also the important main road to link other cities with Pattaya City. Hence, Pattaya City is the center to travel to other cities in the eastern part of Thailand by car conveniently.

There are important national highways link to Pattaya City as follows:

- **Special National Road No. 7 or New Bangkok – Chonburi Highway.** A special highway begins from Srinakarin Road (Bangkok) passing Bangpakong District, Chachoengsao Province to Chonburi Province meeting highway no. 36 at Banpong, northeast of Pattaya City. The approximate length of this highway is 141 kilometers.

- **National Road No. 3 or Sukumvit Road.** It is the important transportation route which is the first national road of the eastern part of the country passing Muang Chonburi District, Sriracha District, Banglamung District, Pattaya City and Sattahip District heading to Rayong Province. The approximate distance from Bangkok to Pattaya City is 147 kilometers.

- **National Road No. 36.** It is the road that separates from Special National Road No.3 (Sukumvit Road) at Banglamung District, Chonburi Province and it once meet National Road No. 3 at Muang District, Rayong Province. The distance to Rayong Province is 55 kilometers.

- **National Road No. 3240.** It is the route that separates from National Road No. 3 at Banglamung District northeast of Pattaya City crossing National Road No. 36 and come to meet National Road No. 331. The distance is 17 kilometers.

Besides the mentioned national roads, there are 9 local roads linking others towns with Banglamung District with the distance of 61,632 kilometers as follows:

- Local Road Route Chor Bor 1008 separates from National Road No. 3 (**Sukumwit**) at Km. 160.500 Barn Chark-ngaew passing Banglamung District and Sattahip District with the distance of 9.8 kilometers.

- Local Road Route Chor Bor 1015 separate from Special National Road No. 7 at Km. 38.050 Barnpongsaked passing the area of Banglamung District with the distance of 10.104 kilometers.

- Local Road Route Chor Bor 1063 separates from National Road No. 3 (Sukumvit Road) at Km. 1058.450 Barnpongsaked passing the area of Banglamung District and Sattahip District with the distance of 5.708 kilometers.

- Local Road Route Chor Bor 2029 separates from National Road No. 36 at Km.2.650 Barnnorngkatanoi passing the area of Banglamung District with the distance of 4.345 kilometers.

- Local Road Route Chor Bor 3002 separates from National Road No. 36 at Km. 124.600 Wat Yarnasungwararam Maharwiharn passing the area of Banglamung District with the distance of 7.298 kilometers.

- Local Road Route Chor Bor 3065 separates from National Road No. 331 at Km. 102.800 Barnpoosai passing the area of Banglamung District with the distance of 5.470 kilometers.

- Local Road Route Chor Bor 5001 Wat Yarnasungwararam Maharwiharn passing the area of Banglamung District with the distance of 6.622 kilometers.

- Local Road Route Chor Bor 5030 Barncharkpalboong – Barnsamnakyarng passing the area of Banglamung District with the distance of 5.285 kilometers.

- Local Road Route Chor Bor 5072 surrounding Kao Chee-oan passing the area of Banglamung District and Sattahip District with the distance of 7.00 kilometers.

Another way to travel to Pattaya City is by air-conditioned buses which depart from Eastern Bus Terminal (Ekamai), Northeastern Bus Terminal (Morchit 2) and Southern Bus

Terminal. Buses depart from these bus terminals every 30 minutes. From [Suvarnabhumi Airport](#), tourists can also take a taxi or air-conditioned buses to Pattaya City.

Air Conditioned Bus Terminal

1. Soi Chaiyapuek Bus Terminal (Police Box). It is located at Norngprue Sub-district Banglamung District Chonburi 20150 Tel. 0-3823-1142 (Servicing with 70 minibus from Pattaya to Ekamai. The first trip is at 05.00 a.m. and the last trip is at 08.00 p.m.)

2. Rungruang Tour Bus Terminal is located on North Pattaya Road, Naklua Sub-district, Banglamung District Chonburi 20260 Tel. 0-3842-9877

3. Rungruang Bus Terminal Co.,Ltd. (Pattaya – [Suvarnabhumi Airport](#)) Is located on Tappaya Road Norngprue Sub-district, Banglamung District Chonburi 20150 Tel. 0-3825-0795, 08-6324-2389.

4. Nakornchai Air Bus Terminal is located on Sukumvit Road opposite the traffic light of Central Pattaya, Norngprue Sub-district, Banglamung District Chonburi 20150 Tel. 0-3842-7481, 0-3842-4871, Call Center 1624

5. 407 Pattana Bus Terminal is located near Muang Pattaya 5 School Sukumvit-Central Pattaya, Norngprue Sub-district, Banglamung District Chonburi 20150 Tel. 0-3842-1535.

6. Petprasert (Pet Tour) Bus Terminal is on Sukumvit Road opposite Boontaworn Shop, Norngprue Sub-district, Banglamung District Chonburi 20150 Tel. 0-3841-6099.

7. Nakhornchai Transportation Bus Terminal ([Pattaya](#)) is on Sukumvit-Central Pattaya Road opposite Nakhornchai Air, Norngprue Sub-district, Banglamung District Chonburi 20150 Tel. 0-3841-5887.

8. Charn Tour Co.,Ltd. Bus Terminal is on Sukumvit-Central Pattaya Road, Norngprue Sub-district, Banglamung District Chonburi 20150 Tel. 0-3871-6528.

9. Srimongkon Transportation Bus Terminal is at 245/82-83 Moo 9 Pattaya No. 3 Road, Norngprue Sub-district, Banglamung District Chonburi 20150 Tel. 0-3842-4085.

Bus Terminal and Boarding Point

* Bangkok

@ Mochit Bus Terminal 2

Location : On Kampaengpet 2 Road, Jatujak District

Ticket Box : No. 48 on the ground floor

Boarding Platform : Platform No. 78

Contact : 02-936-3509

@ Ekamai Bus Terminal

Location : On Sukunvit Road near Bangkok Planetarium and Ekamai BTS station

Ticket Box : No. 32 – 33

Boarding Platform : Platform No. 1

Contact : 02-712-3928

@ New Southern Rout Bus Terminal

Location : On Boromratchachonani Road

Ticket Box : No. 81

Boarding Platform : Platform No. 46

Contact : 02-894-6363

@ Bangna Boarding Point

Location : On Bangna – Trad Road Km. 1 (before Central Bangna Shopping Center)

Contact : 02-747-4370

@ Suvarnabhumi Airport Boarding Point

Location : In the Airport Bus Terminal

Contact : 089-443-7748

* Pattaya City

@ Pattaya Bus Terminal

Location : On North Pattaya Road

Contact : 038 – 429 – 877

@ Pattaya Bus Terminal (Stop at Ao-udom)

Location : On Sukumvit Road Ao-udom

Contact : 038 – 766 – 325

*** Information of Bus Routes ***

Bangkok – Pattaya City

Passengers can choose the way of travelling from Bangkok to Pattaya City at the Bus Terminals as follows:

1. Northern Bus Terminal (Morchit 2) – Pattaya Bus Terminal

Bus Route and Fare	1. From Morchit 2 through Motorway. 117 Baht 2. From Morchit 2 to Bangna – Trad - Buraphavitee (Flyover Toll-way). 108 Baht
Time Table	- Buses depart Morchit 2 every 30 – 40 minutes. - The first bus departs at 04.30 a.m. -The last bus departs at 10.00 p.m.
Tel.	02-936-3509

2. Eastern Bus Terminal (Ekamai) - Pattaya Bus Terminal

Bus Route and Fare	1. From Ekamai to Bangna – Trad - Buraphavitee (Flyover Toll-way). 108 Baht
Time Table	- Buses depart Morchit 2 every 30 – 40 minutes. - The first bus departs at 05.00 a.m. -The last bus departs at 11.00 p.m.
Tel.	02-712-3928

3. Southern Bus Terminal – Pattaya Bus Terminal

Bus Route and Fare	1. From New Sопuthern Bus Terminal to Bangna – Trad - Buraphavitee (Flyover Toll-way). 108 Baht
Time Table	08.00 a.m. , 10.00 a.m., 12.00 a.m., 02.00 p.m., 04.00 p.m.
Tel.	02-894-6363

4. Bangna Boarding Point – Pattaya Bus Terminal

Bus Route and Fare	1. From New Sопuthern Bus Terminal to Bangna – Trad - Buraphavitee (Flyover Toll-way). 108 Baht. (The bus from Ekamai Bus Terminal also stops here).
Time Table	- Buses depart from this point every 30 – 40 minutes. - The first bus departs at 05.30 a.m. - The last bus departs at 09.00 p.m.
Tel.	02-747-4370

Pattaya – Bangkok

Passengers can choose the way of travelling from Pattaya to Bangkok at the Bus Terminals as follows:

1. Pattaya Bus Terminal – Northern Bus Terminal (Morchit 2)

Bus Route and Fare	1. From Pattaya to Bangna – Trad - Buraphavitee (Flyover Toll-way) – Morchit 2. 117 Baht.
Time Table	- Buses depart from the terminal every 30 – 40 minutes. - The first bus departs at 04.30 a.m. -The last bus departs at 09.00 p.m.
Tel.	038-429-877
Ao-udom boarding point	- The bus will stop at this point in case there are passengers waiting for it. 94 Baht
	- The bus leaves Bangna every 30 – 40 minutes - The first bus leaves at 06.00 a.m. - The last bus leaves at 05.30 p.m.
Tel	038-766-525

2. Pattaya Bus Terminal – Eastern Bus Terminal (Ekamai)

Bus Route and Fare	1. From Pattaya to Bangna – Trad - Buraphavitee (Flyover Toll-way) – Morchit 2. 108 Baht.
Time Table	- The bus departs from the terminal every 30 – 40 minutes. - The first bus departs at 04.30 a.m. -The last bus departs at 11.00 p.m. *Passengers can get off the bus before the destination at Homepro Bangplee Branch, the flyover walkway opposite Central Bangna, Udomsuk BTS Station, On-nuch. The passenger must inform the driver before leaving Pattaya Bus Terminal.*
Tel.	038-429-877

3. Pattaya Bus Terminal – New Southern Bus Terminal

Bus Route and Fare	1. From Pattaya to Bangna – Trad - Buraphavitee (Flyover Toll-way) – New Southern Bus Terminal . 108 Baht.
Time Table	08.00 a.m., 10.30 a.m., 01.00 p.m.,
Tel.	038-429-877
Ao-udom boarding point	- The bus will stop at this point in case there are passengers waiting for it. 94 Baht
	06.20 a.m. / 09.20 a.m. / 3.20 p.m. / 6.20 p.m.
Tel	038-766-525

1.2 Travelling to Pattaya by Train

Travelling by train to Pattaya can be made on the route Chachoengsao – Sattahip that is along the eastern coast. The train leaves Chachoengsao Railway Station passing Chonburi Province, Pantong District, Muang Chonburi District, Sriracha District, and Banglamung District to the destination at Sattahip Port with the distance of 134 kilometers.

The trains that pass Pattaya City are Route No.283; Bangkok – **Phlu ta Luang** and Route No. 284 **Phlu Ta Luang** – Bangkok. The train operates from Monday to Friday. The details of the time table of the operation is as follows:

Time Table of the Train Operation

Route #	From / To	Depart from the Origin	Arriving Time	Distance
283 (Normal Train)	Bangkok – Phlu Ta Luang ,	06.55 a.m.		
	Banglamung		10.25 a.m.	144
	Pattaya,		10.35 a.m.	155
	South Pattaya		10.40 a.m.	159
	Phlu Ta Luang		11.20 a.m.	184
284 (Normal Train)	Phlu Ta Luang – Bangkok	01.35 p.m.		
	South Pattaya		02.14 p.m.	25
	Pattaya		02.21 p.m.	29
	Banglamung		02.32 p.m.	40
	Bangkok		06.25 p.m.	184

Source : www.railway.co.th, March 2018

1.3 Travelling by Air

Travelling to Pattaya by air can be made by taking a plane landing at **U-Tapao Rayong Pattaya** International Airport which is in Sattahip, Chonburi and Bancharng Rayong. It is 45 kilometers far from Rayong Province and 190 kilometers from Bangkok.

U-Tapao Rayong Pattaya International Airport is capable of taking big planes like Boeing 747 or Air Bus A380. Because of being situated near **Suvarnabhumi** International Airport, there are not many flights landing here. Most international flights are charter airplanes, especially from Russia.

At this moment **U-Tapao Rayong Pattaya** International Airport is opened for commercial flights and the airlines that use the service of this airport are Bangkok Airways,

Thai Air Asia and Thai Lion Air taking passenger from **U-Tapao** to other domestic airports and international airport depending on the schedule flights. Flight Timetable can be searched at www.utapao.com

1.4 Marine Transportation

Most of marine transportation in Pattaya City area is for tourism which links within the country and outside the country as follows:

(1) Domestic Travelling

There is the port of Pattaya City named “**Bali Hai**” which is the port for passenger boats and tourism boats.

- Pattaya City – Koa Larn and other Islands. There are boats for servicing at South Pattaya Port (**Bali Hai Pier**). The distance is 7 kilometers from the shore taking 45 minutes. There are also speed boats for servicing to other islands around Koa Larn taking only 15 minutes from South Pattaya Beach.

- Pattaya City – Koa Pai. There are boats for servicing at South Pattaya Port (**Bali Hai Pier**) servicing at South Pattaya Port (**Bali Hai Pier**) and at South Pattaya Beach. The distance from Pattaya City to Koa Pai and surrounding islands is 9.5 kilometers.

- Pattaya City – Koa Sichang. There are speed boats for servicing at at South Pattaya Port (**Bali Hai Pier**). The distance is 25 kilometers from Pattaya City.

- Cruise Ship from Pattaya to Koa Samui. This is serviced by Siritara Ocean Queen with 131 serviced rooms on board for 375 passengers. The total time travelling is 15 hours.

- Pattaya - Hua Hin Ferry. This is serviced by Royal Passenger Liner Co., Ltd. with Catamaran ship-type (a huge two-storey ship type with air conditioning). The distance is 113 kilometers from Pattaya City and taking 2 hours for travelling.

(2) International Routes

- **The route of Star Cruise.** There are 3 routes of this ship cruise travelling from Singapore to Lam Chabang Port A1, Siracha which belongs to a private owner for cargo ships as a main service. It is 21 kilometers far from Pattaya City and it takes only 15 minutes to travel to Pattaya City.

- **The route of Yacht.** There is a port for yachts at Ocean Marina Yacht Club which is the biggest yacht club in the east with the water area for 300 yachts and 200 yachts on the land. It is located on **Sukumvit** Road or a kilometer post of 157 km. Jomtian Beach, Sattahip. It takes only 10 minutes to travel to Pattaya City.

The information about marine transportation in Pattaya City presents that it is very convenient to travel to various islands in Chonburi Province and it is also for overseas ships and yachts. According to the location of Pattaya City and the increase of marine transportation, it is reasonable to expand the service of the ferry for tourism and to link with other regions. Moreover, there will be service stations for facilitating tourists with necessary convenience. This can also promote strong and sustain community economic towards tourism industry as the wish of the government.

The Network of Communication and Transportation Link

(1) By Air. Pattaya City has a link with **U-Tapao Rayong Pattaya** International Airport and **Suvarnabhumi** International Airport as follows:

- **U-Tapao** International Airport (Rayong – Pattaya). This airport can be accessed by National Road No. 36 and 331 with the distance of 45 kilometers from Pattaya City.

- **Suvarnabhumi** International Airport. There are two ways to access this airport which are travelling on No. 7 Highway or by taking No. 389 bus (**Suvarnabhumi** International Airport – Pattaya City). It is 110 kilometers from Pattaya City.

(2) By Road. Pattaya City has its network linking other towns or cities by main national roads. The main link of roads to Pattaya City is National Roads which are Bangkok – Chonburi – Pattaya travelling on No. 3 Road (Sukumvit Road), Special National Road No. 7 (**Motorway**), and other links with roads connecting to Pattaya City as National Road No. 3 (Sukumvit Road), National Road No. 36 and 331.

(3) By Train. Pattaya City can be accessed by train with Chachoengsao – Sattahip Route which is the railway along the eastern coast.

(4) By Water Ways. There are water ways to access Pattaya City both for tourism and commercial transportation. There is also a port for ships to link Pattaya City with Cha-am and Hua Hin and also Trad Province. The deep sea port is for transportation and trading with ASEAN and Songkhla Province.

Transportation within the Combined City Plan

1) Road System.

(1) Class of Roads. The class of roads within Pattaya City is discriminate by 4 service types as follows:

- Main roads, Expressways, and Freeways. These kinds of roads are used to connect other towns or cities with a long distance passing towns and in – out towns. The condition of

the traffic is high speed driving and crowded. The main road is linked by minor roads and with a long distance and controlled the access in and out. The roads within the combination city plan of Pattaya City are National Road No. 3 (Sukumvit Road), National Road No. 7, and National Road No. 36.

- Main Roads. These roads are used for linking main roads, and minor roads with various centers of the city. The conditions of these roads are with fast speed vehicles and long distance which are National Road No. 3240 (Naklua – Pattaya City), North Pattaya Road, Central Pattaya Road, South Pattaya Road, Teppasit Road, Pattaya 2 Road, Pattaya 3 Street, Jomtian Road, Pornprapanimit Road, Nern Plubwarn Road and Chaiyapuek Street.

- Minor Street. This kind of road is also called collecting and distributing the traffic. The main use of this kind of streets is for collecting and distributing the traffic from the main roads and minor roads. The condition of these streets are for low speed traffic because of being annoyed by the activities of both sides of the streets. These streets are Sawangfa Street, Pattaya 1 Street, Pattaya 3 Street and Chaiyapuek Street.

- Local Roads. These roads are quite narrow with slow speed traffic and short distance leading to particular areas such as Soi, and Lane.

(2) Network Pattern Road

The network pattern road of combined city plan of Pattaya City is like a checker with the main road and major roads in the north as Sukumvit Road, Naklua – Pattaya Road, Pattaya 2 Road, and Pattaya 3 Road and there are also main roads in the east and in the west that spread out to Pattaya City like “Super Line” as the checker like North Pattaya Road, Central Pattaya Road, South Pattaya Road and Teppasit Road.

The condition of a network pattern road can be discriminated into two types that are the area on the west side of Sukumvit Road or the site of Pattaya City as the land of this site is beneficially used and there are more roads than the other sides of the city. Most roads are 10 – 20 meters wide with 2 – 4 traffic lanes and the structure of the road is systematic like a checker. The important roads near the west coast area of Sukumvit Road are Pattaya – Naklua Road, North Pattaya Road Central Pattaya Road, Sout Pattaya Road, Chalermprakiat Road, Pattaya No.2 Road, Pattaya No. 1 Road, Poetisarn Road, Jomtian Road, and Teppasit Road. However, the roads in the east of Sukumvit Road are not systematic. These roads are National Road No. 3240, Pornprapanimit Road, Nernplabwarn Road, **khaotalo Road**, and

Boonsampan Road. Therefore, there will be the development of the system of these roads to be more systematic to support the rapid growth of the city.

Public Transportation System

Public Transportation System is not available in Pattaya City at this moment as there is no regular bus to service people, but for the mini bus and motorcycle. At this moment, there are 4 routes of mini bus to service people as follows:

Mini Bus Routes within the Combined City Plan

No	Route #	Direction	Fare (baht)	Distance
			All route	(km)
1	4	Bali Hai Pier – Banglamung	7 - 10	10
2	5	Charoenrat Village – Najomtian	7 - 22	28.8
3	6	Around Pattaya City	7 - 12	16
4	7	North Pattaya – Central Pattaya	8 - 23	25

**At present, the average fare for getting on and off is 10 baht and 20 baht for the whole route.

Source : Pattaya Cooperative Transportation : February 2018

Besides, travelling within Pattaya can be made by taking a mini bus (Sornng Taew) which goes circularly on the beach road (Pattaya No. 1 Road) and Pattaya No. 2 Road which are the main points for tourists to visit. Motorcycle-taxi and tricycles in many points can be taken to the desired destination and motorcycles and cars can be hired for using in Pattaya City area.

Beyond the road that lies along the beach and Pattaya No. 2 Road, there are various sources for tourists to visit as they are the locations of hotels, restaurants, shops and tourist attractions which tourists can access by walk as Pattaya No. 3 Road, North Pattaya Road, Central Pattaya and South Pattaya; wellknown as “Walking Street” including Tappaya Road which links Pattaya Beach and Jomtian Beach.

Statistic Showing the Flow of Traffic from 2013 – 2017

Year	In traffic Highest average (a unit per day)	Out traffic Highest average (a unit per day)	Remarks
2013	266,000	270,110	- There is a high fluent traffic on normal days

			- A slight traffic jam can be found on holidays as there are many cars, but moveable.
2014	283,030	294,426	- There is a high fluent traffic on normal days - There are a lot of traffics and be able to move slowly on holidays. Traffic police are needed to manage the traffic.
2015	285,661	302,575	- There is a hard traffic on rush hours when schools open. -The traffic easily flow after rush hours. -There are a lot of traffics and hard to move on festivals and holidays.
2016	300,859	314,084	- There is a hard traffic on rush hours when schools open. - The traffic easily flow after rush hours. -There are a lot of traffics and hard to move on festivals and holidays.
2017	305,602	311,936	- There is a hard traffic on rush hours when schools open. - The traffic easily flow after rush hours. -There are a lot of traffics and hard to move on festivals and holidays.

Source : Traffic and Transport Section, Mechanic Department Pattaya City, April 2018

2. The Use of Land and Buildings

The Use of Land

According to the survey of the use of land for benefit in 2009, it can be categorized the types of using the land as follows:

Types of Using the Land	Amount of Area	
	Rai	%
Accommodation	14,423	12.47
Commercial	4,930	4.26
Industry and Warehouse	616	0.53
Educational Institution	636	0.55
Religious Institution	501	0.43
Government Office	610	0.53
Leisure and Entertainment	302	0.26
Road, Soi, and Lane	3,990	3.45
River, Canal, and Swamp	4,718	4.08
Agriculture and Free land	84,900	74.43
Total	115,626	100

Source : Last report of the study of the development of the Combined City Plan of Pattaya City (April 2010)

1. The area of land used for accommodation is 14,423 Rai or 12.47% or coming at the 2nd post under the use for agriculture and free land. The area that is mostly used in Pattaya City is at both side of Pattaya – Naklua Road where the former local situated the settlement. The crowded area is the area along Tappaya Road and Sukumvit Road then the eastern side of Sukumvit Road in the area of Nornprue Muang Municipality by Nernplubwarn Road, Praparnimit Road and Kao Talo Road.

2. The area of land used for commercial is 4,930 Rai or 4.26%. The area which is the most crowded for industry and commercial purposes is from North Pattaya Road to South Pattaya Road, especially Pattaya No.1 Road and Pattaya No. 2 Road are the commercial points as there are hotels, accommodation, shops, restaurants and entertainments situated on both

side of the roads. Besides, there are expansions of commercial centers along Sukumvit Road, Teppasit Road, and Najomtian Beach Road.

3. The area of land used for industry and warehouse is 616 Rai or 0.53 showing that the use of the land of this kind is less than accommodation and commercial purposes. It is not obvious for industrial use as most of them are along Sukumvit Road, National Road No. 36 and National Road No. 3240.

4. The area of land used for education is 636 Rai or 0.55%. Most educational institutions are along Sukumvit Road which is the main road of Pattaya City. Others in different places are with religion institutions.

5. The area of land used for religion institutions is approximately 501 Rai or 0.43% scattering along Sukumvit Road and in the original community.

6. The area of land used for government office is approximately 610 Rai or 0.53%. The government offices are local government offices and regional government offices scattering along Sukumvit Road, North Pattaya, Central Pattaya, South Pattaya, and National Road No. 3240.

7. The area of land used for leisure and entertainment is approximately 302 Rai or 0.26%. Pattaya City has few areas for leisure and entertainment, but it can be substituted by the area of the beach.

8. The area of land used for road, soi, and lane is around 3,990 Rai or 3.45% of all area. Most area is at the west side of the railway; Sukumvit Road, Pattaya – Naklua Road, North Pattaya Road, Central Pattaya Road, South Pattaya Road, Teppasit Road, Pattaya No.1 Road, Pattaya No.2 Road. At the east side of the railway are minor roads which are narrow; Nornplalai Road, Mabprachan Road, Pornprapanimit Road, Nernplubwarn Road and Sukumvit – Huay-yai Road.

9. River, canal and swamp cover 4,714 Rai or 4.08% of the area. There is no river within the combined city plan, but for canals of which the water flows from the east to the west. Most of the water resources are 2 reservoirs which are Marbprachun Reservoir and Chark-nork Reservoir. There is the canal of which the water flows passing Pattaya City to the sea, namely, Klong Naklua, Klong Nornprue, Huay Suapaew and Huay Yai.

10. The area of land used for agriculture and free land is around 84,900 Rai or 73.43% of the area. Most of this kind of land is in Pattaya City within the combined city plan abandoned as a free land. The area used for agriculture like planting rice, and tapioca is

scattering in the area of Norngplalai Sub-district, Pong Sub-district, Norngprue Sub-district, and Huay Yai Sub-district.

The Use of Buildings

1. There are 69,788 units of the accommodation covering the land of 8,148,369 m². There are 42,572 single houses, 1,071 single buildings, 9,486 townhouses, 6,723 one storey connected houses, 3,143 hotels, 1,617 unregistered buildings (flats, mansion), 262 condominiums, 476 floating houses, 5 port offices, and 215 other constructions.

2. There are 12,553 commercial buildings covering the area of 2,305,362 m². This takes the second place of the accommodation. There are 2,844 single houses, 542 townhouses, 2,048 one storey connected houses, 3,623 lined concrete buildings, 1,962 hotels, 19 floating houses, 4 port offices, 179 office buildings and 123 other constructions.

3. There are 1,122 buildings of industries and warehouses covering the area of 377,120 m². There are 631 single houses, 314 single buildings, 13 townhouses, 104 one storey connected houses, 17 lined concrete buildings and 43 units of other kinds.

4. There are 610 buildings of educational institutions covering the area of 198,956 m². There are 442 single houses, 126 single buildings, 29 one storey connected houses, 8 lined concrete buildings and 5 units of other kinds.

5. There are 869 buildings of religion institutions covering the area of 113,520 m². There are 426 single houses, 138 single buildings, 4 townhouses, 5 one storey connected houses, 3 lined concrete buildings and 293 units of other kinds.

6. There are 623 buildings of government offices covering the area of 165,239 m². There are 456 single houses, 124 single buildings, 3 townhouses, 11 one storey connected houses, 20 lined concrete buildings and 9 units of other kinds.

7. There are 217 buildings for leisure covering the area of 127,507 m². There are 112 single houses, 40 single buildings, 4 townhouses, and 61 units of other kinds.

8. There are 3,035 buildings of other kinds covering the area of 527,355 m². There are 462 single houses, 1,998 single buildings, 13 one storey connected houses, 21 lined concrete buildings, 15 hotels, 40 units of unregistered buildings, 3 floating houses, 3 office buildings and 483 units of other kinds.

Source : City Plan Section, Mechanic Department, February 2018

Table Showing Numbers and Sizes of Buildings Covering Land, Classified by Types and Kinds in the 2007 Combined City Plan of Pattaya City

Type of Buildings	Numbers	Area Covered	Single Houses	Single Buildings	Townhouse	Connected Rooms	Connected Buildings	Hotel	Nonregistered Buildings	Registered Buildings	Floating Houses	Ports	Office Buildings	Others
Accommodation	69,788	8,148,369	42,572	1,071	9,486	6,723	4,218	3,143	1,617	262	476	5	-	215
Commercial	12,553	2,305,362	2,844	1,209	542	2,084	3,623	1,962	-	-	19	4	179	123
Industry and Warehouse	1,122	377,120	631	314	13	104	17	-	-	-	-	-	-	43
Education Institutions	610	198,956	442	126	-	29	8	-	-	-	-	-	-	5
Religious Places	869	113,520	426	138	4	5	3	-	-	-	-	-	-	293
Government Off.	623	1695,239	456	124	3	11	20	-	-	-	-	-	-	9
Leisure	217	127,507	112	40	-	4	-	-	-	-	-	-	-	61
Others	3,035	527,355	462	1,998	-	13	21	13	40	-	-	-	-	483
Total	88,817	11,963,427	47,945	5,020	10,048	8,937	7,910	5,118	1,657	262	498	9	181	1,232

Source : The Last Study Report of the Assessment of Combined City Plan Development, April 2010

**The Area Permitted for Construction in Pattaya City Area
Classified as the Objectives in 2010 – 2017**

Year	Accommodation		Commercial		Hotel		Service and Transportation		Others		Total	
	Numbers	M ²	Numbers	M ²	Numbers	M ²	Numbers	M ²	Numbers	M ²	Numbers	M ²
2017	227	232,168	69	61,565	11	59,186	9	40,458	13	1,899	329	395,276
2016	201	336,789	82	85,389	7	54,812	13	30,680	28	5,387	331	513,057
2015	257	521,390	81	284,563	8	100,081	7	21,456	34	9,816	387	937,306
2014	234	384,993	49	68,200	6	84,861	11	15,152	18	2,992	318	556,198
2013	259	462,394	101	193,835	10	40,333	0	0	18	9,267	388	705,829
2012	290	363,249	47	37,907	2	26,988	4	16,353	14	12,367	357	456,864
2011	407	444,520	89	126,728	3	13,132	21	17,067	15	7,081	353	608,528
2010	581	899,686	91	85,972	10	79,752	3	10,787	30	24,025	715	1,100,222
2009	499	705,815	81	140,811	8	140,811	-	-6,704	28	20,792	616	920,954
2008	628	1,180,054	115	197,317	5	22,551	1	2,753	50	40,484	798	1,440,406
2007	596	929,474	85	172,317	1	622	6	161,410	26	20,671	713	1,125,370
2006	4,179	6,460,532	890	1,454,945	71	623,129	75		274	154,781	5,487	8,760,010

Source : Mechanic Department of Pattaya City, 2018

3. Water Work

The office of provincial waterwork Pattaya Branch (Special Class) is at 26/1 Chaipornwitee Road, Moo 12, Norngprue Sub-district, Banglamung District, Chonburi Province. The telephone number is 038-222-624, Fax. 038-222-465.

Pattaya City uses the service of water work from Pattaya Provincial Water Work Office which take raw water from 3 reservoirs in Pattaya City area. The severelack of water period was in April and May 2016 affecting the area of Huay Yai Sub-district and Najomtian Sub-district.

Pattaya Provincial Water Work classifies the users of water work into 5 types that are accommodation and commercial building, condominium and hotel, government office and school, hospital and industry.

Quantity of Water Consumption in 2017 (1 January – 1 December 2017)

Details	No. of Users	Quantity of Water Used (M ³ per year)	%
1. Households and Commercial Buildings	65,700	19,532,640	64.85
2. Condominium and Hotels	2,329	8,889,716	29.52
3. Government Offices and Schools	337	1,094,088	3.63
4. Hospitals	205	199,704	0.66
5. Industries	13	402,024	1.34
Overall	68,694	30,119,172	100

Source : Pattaya Provincial Water Work Office : February 2018

4. Electricity

Pattaya Provincial Electricity Office is at 100 Moo 2, Pattaya – Naklua Road, Naklua Sub-district, Banglamung District, Chonburi Province. The telephone number is 038-222-085 Fax. 038-221-007. The responsibility to distribute the electric current in Pattaya City is as follows:

Details of Distributing Electric Current in Pattaya City (September 2016)

Station	Transformer		Total (MPV)	Load Highest Load (MW)
	size	number		
1. Banglamung	50	2	100	58.3
2. Jomtian	50	2	100	54.6
3. South Pattaya	50	2	100	51.9
4. South Pattaya 2	50	1	50	64.5
5. North Pattaya	50	2	100	62.2
6. North Pattaya 2	50	1	50	28.1
7. Kao Maikaew	50	1	50	25.2

- Maximum ability to supply electricity 600 MVA
- Supply electricity to responsible areas 344.8 MVA
- Additional Supply Capacity 255.2 MVA

The statistic of the use of electricity in Banglamung District in 2017 revealed that there were 156,831 electric user. When comparing to the statistic of the use of electricity in 2016 and 2017, it was found out that there were 6,186 electric users increasing or 4.11%.

Statistic of Electric Users

Types	December 2016		December 2017		December 2018	
	Number	%	Number	%	Number	%
1. Households (not over 150 units)	13,350	8.86	13,933	8.88	583	4.37
2. Households (over 150 units)	112,649	74.78	117,699	75.04	5,050	4.48
3. Small business	17,889	11.87	18,398	11.73	509	2.85
4. Medium business	1,140	0.76	1,137	0.72	(-3)	(-0.26)
5. Large business	44	0.03	45	0.02	1	2.27
6. Specific business	878				6	0.68
7. Gov. offices & non-profit org.	-	-	-	-	-	-
8. Pumping water for agriculture	-	-	-	-	-	-
9. Temporary electricity	4,695	3.12	4,735	3.01	40	0.85
Overall	150,645	100	156,831	100	6,186	100

- Numbers of households using electricity 156,836
- The service covers 100% of service areas.

Source : Pattaya Provincial Electricity, March 2018

5. Communication and Telecommunication

1. **Radio Stations.** There are two radio stations that are Navy Radio Station at Pattaya located on Pratamnak Hill and the Radio of Thailand located at Soi Tonkrabok Mosque, Sukumvit Road, Km. 142+420

2. **Cable Television.** There are 4 cable television stations which are STV, BTV, Jomtian Cable TV and Tipmanee Cable TV.

3. **Post Office.** There are 4 post offices as follows:

1. Pattaya Post Office, Soi Praisanee, South Pattaya
2. Jomtian Post Office
3. Banglamung Post Office, Sawarnghah puetararm Road, Naklua
4. Koa Larn Post Office

4. Telephone

4.1 Numbers of Personal telephone	30,019	numbers
- Official section	397	numbers
- House	17,574	numbers
- Business	11,881	numbers
4.2 Public Telephone	1,180	numbers
4.3 Cable Station	57	stations

Source : Pattaya Telephone Service Office : February 2018

5. Telecommunication Center.

There is only one center at 124 Moo 10, Soouth Pattaya Road, Norngprue Sub-district, Banglamung District, Chonburi Province 20150.

6. Local Mass Media

There are 15 copies of local newspapers.

- 6.1 Pattaya News
- 6.2 Eastern Media
- 6.3 Na Na Leader

- 6.4 Siam
- 6.5 Kaw Det
- 6.6 Pattaya Times
- 6.7 Pattaya People
- 6.8 Pattaya Vision
- 6.9 Pattaya Post
- 6.10 Pattaya Mail
- 6.11 Pattaya Dot Com
- 6.12 Pattaya Today
- 6.13 Asaneedewa Hot News
- 6.14 FARANG
- 6.15 Pattaya Press

7. Offices with radio network for communication in the area and closed area

No	Office	No	Office
7.1	Chonburi Danger Protection	7.14	Pattaya Water Work Office
7.2	Chonburi Provincial Office	7.15	Banglamung Cable
7.3	Banglamung District	7.16	Sopon Cable
7.4	Pattaya City	7.17	Pattaya Fisherman Association
7.5	Banglamung Danger Protection Volunteer	7.18	Banglamung Hospital
7.6	Pattaya Police Station	7.19	Bangkok – Pattaya Hospital
7.7	Banglamung Police Station	7.20	Pattaya Memorial Hospital
7.8	Pattaya Tourist Police	7.21	Tourism Authority of Thailand
7.9	Marine Police (Koa Loi)	7.22	Sattahip Navy Base
7.10	Pattaya Highway Police	7.23	Tipmanee Cable
7.11	Sawangboriboon Center	7.24	Nornprue Municipality
7.12	Pattaya Municipal Officer	7.25	Banglamung Electric Office
7.13	Pattaya Marine Office	7.26	Dongtarn Center

ECONOMIC ASPECT

◆ ECONOMIC ASPECT ◆

Pattaya City is a famous tourist attraction for both Thais and foreigners and it has been developed to be the main tourist attraction of the eastern part. Accordingly, most of economic activities based on tourism and services, so the majority of people or 90% do business along various forms trading and servicing tourists while others earn their living on agriculture, industry, fishing and trading.

Department of Community Development, Ministry of Interior reported in 2015 that the people in Chonburi Province obtained their incomes with the average of 121,065 baht/person/year (latest adjusted information on 25 December 2017) according to the following details:

1. Industrialization

Tourism industry is the most important economic activity of Pattaya City. More than 90% of workers in industry areas are hired in tourism industry to work in hotels, resorts, bungalows, night clubs, entertainments, and restaurants. Fewer workers are hired to work in concrete factory, block concrete factory, concrete floor factory, door and window frame factory and tapioca grinding factory.

2. Agriculture

The agricultural area of Pattaya is at Huay Yai Sub-district and Nongplalai Sub-district with the plantation of tapioca, pineapple and coconut trees. Very few people earn their living on this as the price of the land is increasing sharply.

3. Commercial and Services

There are various kinds of business done in Pattaya City as retailer, import and export, providing services to tourists like equipment for facility and entertainment for rent; motorcycle for rent, jet ski for rent, tour boat for rent, parachute sailing, and banana boat for rent. Besides, there are other business provided to tourists as follows:

Business	Amount
- Hotels	1,021
- Resorts	208
- Guest Houses	271
- Condominiums	338
- Housing Villages	220

- Bungalows	23
- Apartments, Mansions	621
- Banks, Bank Counters	545
- Gas Stations	22
- LPG Stations	16
- NGV Stations	2
- Department Stores/Super Markets	577
- Restaurants	2,273
- Entertainments	1,037
- Tourist Attractions	217

Source : Pattaya City Call Center (1337) : February 2018

15 Market Places in Pattaya City

There are many market places in Pattaya City, but they are divided into two groups as the market under the responsibility of Pattaya City and under the responsibility of private sectors as follows:

- The markets under the responsibility of Pattaya City:

1. Larnpoe Market
2. Naklua New Market

- The markets under responsibility of private sectors:

- | | |
|--------------------------|----------------------------------|
| 1. Tony Bazar Village | 8. Sophon Market |
| 2. Amorn Nakhorn Market | 9. Lotus Market, Central Pattaya |
| 3. Poetisarn Market | 10. Keha Center Market |
| 4. Peerapon Market | 11. Wilai Whole Night Market |
| 5. Wat Tamsamakee Market | 12. Rom Poe Market |
| 6. Top One Market | 13. Pattaya Bazar Market |
| 7. Bua Koaw Market | 14. Mini Siam Market |

Tourist Attractions, Fun Lands, Sports and Adventures in Pattaya City and Nearby

Pattaya City is a famous tourist attraction and well-known for people around the world. There are various tourist attractions of both natural and man-made places for tourists to visit as follows:

- | | |
|--|--------------------------------|
| 1. Monster Aquarium Pattaya | Tel. 085-1523715 |
| 2. Bottle Art Museum Pattaya | Tel. 038-422357, 085-3638989 |
| 3. Ancient City Pattaya | Tel. 038-367229-30, 038-367815 |
| 4. Mini Siam | Tel. 038-727666, 038-727333 |
| 5. Marbprachun Reservoir | Tel. 038-733396, 038-249777 |
| 6. Chalermprakiat Park (Pratamnak) | Tel. 038-413902 |
| 7. Million Year Stones and Crocodile Farm | Tel. 038-249347-9 |
| 8. Wang Sarm Sian | Tel. 038-413902 |
| 9. Prince Chumporn Kateudomsak Statue | Tel. 038-413902 |
| 10. Under Water World Pattaya | Tel. 038-756876-9 |
| 11. Samkok Garden | Tel. 038-421428-9 |
| 12. Ripley's Museum | Tel. 038-710294-8 |
| 13. Sukhawadee House | Tel. 038-703184, 038-223454 |
| 14. Tuxedo Illusion Hall | Tel. 081-6421705 |
| 15. Teddy Bear Museum | Tel. 038-411285 |
| 16. Four-Region Floating Market | Tel. 038-706340, 038-076802 |
| 17. Art in Paradise | Tel. 038-424500, 038-424511 |
| 18. Suriya Music Art | Tel. 038-255568 |
| 19. Pipo Pony Club | Tel. 038-249555 |
| 20. Big Bee Farm | Tel. 038-172001-4 |
| 21. Pattaya Dolphin World | Tel. 038-051790-6, 061-8143939 |
| 22. World James Collection | Tel.038-412333 |
| 23. James Gallery Pattaya | Tel. 038-371222 |
| 24. Koloseum Show Pattaya | Tel. 038-425939 |
| 25. Artificial Royal Boat Show Center | Tel. 082-8655353 |
| 26. Love Art Park Pattaya | Tel. 038-237720 |
| 27. Amazing Art Pattaya | Tel. 038-421156, 095-7543250 |
| 28. Ancient Chinese Community, Charn-ngaew Village | Tel. 081-8703398 |

29. Frost Magical Ice of Siam Pattaya Tel. 038-111270, 063-6694559
30. Overturn House Tel. 092-5989019
31. Kaan Show (Floatable Theatre) Tel. 062-6942007-8
32. Carved Buddha Image on the Hill at Cheejun Hill
33. Yarnasangwarararm Monastery Tel. 038-238369
34. Nongnuch Garden Pattaya Tel. 038-238158, 038-238061-2
35. Silver Lake Grape Garden Tel. 02-2616565
36. Mimosa Pattaya Tel. 038-237318-9
37. Pattaya Sheep Farm Tel. 092-3216718
38. Grada Farm Tel. 033-006218
39. Chee-oan : No Animal Hunting area Tel. 038-311234
40. Sunset Sweet Shell Farm Tel. 084-5307410
41. Thaitanee, Cultural and Art Village Tel. 038-119080
42. Magician House (Anakekusol Sala) Tel. 038-343555
43. Wonder Farm Tel. 089-8942276
44. Swiss Sheep Farm @Kao Cheejun Tel. 038-119095, 099-1234134
45. Koa and Talae Thai Natural Museum Tel. 038-432475, 038-432473
46. Percular Farm (Cartoon Fish Farm) Tel. 081-3136324
47. Jakreenaruebet Royal Warship, Satahip Naval Base Tel. 038-438457
48. Similan Royal Warship, Satahip Naval Base Tel. 038-438457
49. Sea Tortoise Reservation Center, Satahip Naval Base Tel. 038-431318
50. Undersea Garden at Koa Kharm Tel. 038-432170
51. Toey-ngarm Beach (Tagun Bay) Tel. 038-334188
52. Saikaew Beach (Navy Academy) Tel. 038-136187
53. Narngam and Narngrong Beach (Samaesarn Sattahip) Tel. 038-431261,
54. Sor Beach, (Support Section, Department of Navy Weapon)
55. Koa Loi, Sriracha Tel. 038-321801
56. Koa Srichang, Sriracha Tel. 038-216224
57. Koa Kiew-Kao Chompoo Wild Animal Reservation, Bangpra, Srirach
Tel. 038-311234
58. Non-wild animal hunting Area, Banpra (Bird Watching Activity)
59. J-Park Sriracha Tel. 038-338444

60. Chantaten Waterfall (Bangpra, Sriracha) Tel. 038-341787
61. Space Inspirium Tel. 038-046300
62. Sriracha Tiger Zoo Tel. 038-296556-8
63. Kao Kiew Open Zoo Tel. 038-298195, 038-298189
64. Pattaya Elephant Village Tel. 038-249818, 038-249853
65. Elephant Camp and Monkey School Tel. 038-706312, 038-706272
66. Siam Elephant, Kratinglai Tel. 089-8334925
67. Thaitong Elephant Park Tel. 081-5757554
68. Snake Show, Pattaya Tel. 081-6240917
69. Tiffany Show Tel. 038-422170-2
70. Alcasar Cabaret Show, Pattaya Tel. 038-422220, 038-410224
71. Pattaya Park Fuuny Land Tel. 038-251201, 038-364110-2
72. Cartoon Network Water Park Amezone, Pattaya Tel. 038-237707
73. Ramayana Water Park Tel. 033-005929
74. Harbour Land, Pattaya Tel. 081-3770101
75. Pattaya Shooting & Adventure Park Tel. 038-907808
76. Pattaya Cart Speedway Tel. 038-422044
77. Supper Cart Racing Tel. 038-727410
78. Easy Cart Pattaya Tel. 038-711403-4
79. The Horse Shoe Point Club Tel. 038-735050-9
80. Mini Siam Kocart Tel. 038-727410, 038-421628
81. [Suan Thai Pattaya](#) Tel. 088-0998788

Pattaya Beach



Pattaya Beach, a semicircle like shape, is the tourist attraction of Pattaya City with the 3 kilometer road along the beach and varieties of plants suitable for relax. Besides, there are facilities available like equipment for land and water sports.

Pattaya Beach begins from North Pattaya (Dusit Thani Intersection) along the road to South Pattaya. This area is the crowded community with hotels, shops, restaurants, and nearly every kind of business located here including bear bars, night clubs, cabaret shows for tourists to see at night time.

Jomtien Beach



It is another place of Pattaya for tourists to relax by the beach. It is 6 kilometers from Pattaya and it is different from Pattaya Beach which arms by Pattaya Bay. There is a road along the beach with the length of 3 kilometers. A lot of both Thai and foreign tourists like Jomtien Beach as it is quiet and there is shade from the trees. Water sports are available here

like water skiing, jet skiing, wind surfing, and banana boating. Besides, restaurants and seafood restaurants are also available here.

Wongprachan Beach

It is located in the north of Pattaya, Soi Wong Amart, with the length of 1 kilometer and with calmness and clear water.

Kratinglai Bay

It is the new beach that Pattaya city promotes it to be the natural tourist attraction by announcing it having no disturbance to tourists. This makes the beach quiet and calm suitable for relaxing. There is the arrangement of the garden by planting trees and making seats for relax and exercise. The beach is 900 meters long and 30 meters wide.

Chalermprakit Garden Pattya

Pattaya City has made the garden at the foot of Pattaya Hill (Pratamnak Road) to honor King Rama IX on 5 December 1988 when the king was 60 years old. The area of this garden is 15 Rai for relax and exercise.

Pattaya Hill (Kao Prabart)

The beauty of Pattaya Beach is not only seen on the land, but it can be seen more beautifully from the top of Pattaya Hill. All views of Pattaya can be seen from this point. There is a must for all tourists to visit this place and look at the semicircle shape of Pattaya Beach. Besides, Buddhists can pay respect to the sacred Buddha Image and the birth date Buddha image for luck. This place is also the location of Navy Radio and the statue of Prince Chumporn Kateudomsak who are still worshipped by nearly every navy soldier.

Sports Tour Activities

Pattaya City realizes the important of sports that can bring the fame and economical revenues for both Pattaya City and the country, so that Pattaya City supports and organizes activities for famous sports as follows:

- Thailand Windsurf Tournament (Competition 1 and 2)

The time of the event : Competition 1 : every January of each year

Competition 2 : every April of each year

Place : Jomtian Beach, Pattaya City

- Honda LPGA Thailand
The time of the event : Around every February
Place : Siam Country Club Golf Course, Pattaya City
- Mountain Bike Cross Country of Pattaya City
The time of the event : every April
Place : Pratamnak Hill, Pattaya City
- International Sailing Competition
The time of the event : the end of April – the beginning of May
Place : Ocean Marina Yacht Club
- Pattaya Tri Sports
The time of the event : the third Sunday of May
Place : Along Pattaya Beach Road
- Pattaya Marathon
The time of the event : Around July of every year
Place : Along Pattaya Beach Road
- International Male Beach Football Competition
The time of the event : every December
Place : Jomtian Beach, Pattaya City
- Jet Ski World Cup
The time of the event : every December
Place : Jomtian Beach, Pattaya City

Diving

The place for selling and hiring diving equipment, training including facilitating for diving are as follows:

- | | |
|-----------------------------|-----------------------------|
| 1. Aqua Nas | Tel. 038- 429117 |
| 2. Aqua Relax Diving Center | Tel. 038-710900, 038-635095 |
| 3. Mermaid Dive Center | Tel.038-292219-20 |
| 4. Paradise Scuba Diver | Tel. 038-710567 |
| 5. Safari Sport Center | Tel. 038-429253 |
| 6. Dave Diver Dent | Tel. 038-420411 |
| 7. Scuba Moose Dive Center | Tel. 038-424205 |

Sailing Boat Sport

Rachawaroon Sailing Boat Association under the patronage of the King, the first sailing boat association founded in 1957 under the name of Waroon Marine located at 289 Moo 2, Banglamung District, Chonburi Province. This association has been run without profit demand aiming to support sailing boat sport in Thailand. Rental sailboats as Lacer, Hobie 1, Hobie 16 and Hobie 17 types are available. The contact numbers are 038-250367-8 and 038-250015-6.

Windsurf

Windsurf Association is located in Surf Beach Hotel, Moo 12 Jomtien Beach Road, Nongprue Sub-district. The telephone number is 038-233470.

The place to hire windsurf equipment are as follows:

1. In front of Krua Surf, Jomtien Beach
2. In front of Somprosong Plaza, Jomtien Beach

Badminton

Pattaya Badminton Club is located at Pattaya Soi 17, Pattaya 3 Road, Nongprue Sub-district consists of four badminton courts. The service hour is from 02.00 p.m. – 12.00 p.m.

Bowling

1. P.S. Bowling Pattaya. It is located on the third floor of Top Super Market, Moo 9, Central Pattaya Road, Nongprue Sub-district. Tel. 038-420965-7.
2. SF Strike Bowl. It is located on the sixth floor of Central Festival, Pattaya Beach, Pattaya 2 Road, Nongprue Sub-district.
3. Blu-O-Bowl. It is located on the third floor of The Avenue Pattaya, Pattaya 2 Road, Nongprue Sub-district.
4. OD Bowl. It is located in OD Hotel, Moo 10, Pratamnak Road, Nongprue Sub-district. Tel 038-423612
5. Pattaya Bowl. It is located at Moo 9, Pattaya 2 Road. Tel. 038-423885.

Tennis

There are various tennis competitions held for the youth, national and international levels. There are many tennis courts in Pattaya City for rent to play as follows:

1. Dusit Resort Hotel Tennis Court Tel. 038-425611

2. Montien Pattaya Hotel Tennis Court Tel. 038-428155
3. Siam Bay Shore Tennis Court Tel. 038-428678-81
4. Royal Cliff Hotel Tennis Court Tel. 038-250421

Golf Courses

Inside Pattaya City Area

1. Asia Pattaya Hotel Golf Course Moo 10, Nongprue Tel. 038-428602-6
2. Diana Garden Sport Moo 6, Naklua Tel. 038-370363
3. Pattaya Driving Range Moo 6, Pattaya No.3 Road, Naklua Tel. 038-370462
4. Green Way Driving Range Moo 11 Nongprue Tel. 038-231388

Outside Pattaya City Area

1. Pattaya Country Club Moo 2 Kao Maikaew Tel. 038-423718-9
 2. Siam Country Club Moo 9 Pong Tel. 038-239391-6
 3. Phoenix Country Club Moo 6 Huay Yai Tel. 038-239391-6
- @Pattaya Sport Club Golf (for member) Moo 6 Naklua Tel. 038-73114

Ministry of Tourism and Sports, Thailand

Number of Foreign Tourists from January to December 2017

Country of Nationality	Number		% Change	Country of Nationality	Number		% Change
	2017P	2016	2016/15		2017P	2016	2016/15
East Asia	23,642,669	21,593,285	+9.49	East Asia	998,832.50	882,192.10	+13.22
ASEAN	9,119,941	8,585,251	+6.23	ASEAN	269,971.95	248,725.39	+8.54
Brunei	14,249	14,025	+1.61	Brunei	686.03	671.53	-2.16
Cambodia	854,431	674,975	+26.59	Cambodia	26,251.90	21,195.14	+25.13
Indonesia	574,764	534,797	+7.47	Indonesia	17,539.89	16,124.90	+8.78
Laos	1,612,647	1,388,020	+16.18	Laos	41,928.33	36,736.93	+14.13
Malaysia	3,354,800	3,494,890	-4.01	Malaysia	87,132.21	88,612.70	-1.67
Myanmar	365,590	341,626	+7.01	Myanmar	14,606.43	12,462.24	+17.21
Philippines	380,886	339,150	+12.31	Philippines	36,268.75	33,144.00	+9.43
Singapore	1,028,077	967,550	+6.20	Singapore	29,642.51	25,680.18	+15.43
Vietnam	934,497	830,220	+12.56	Vietnam	29,642.51	25,680.15	+15.43
China	9,805,753	8,757,646	+11.97	China	524,451.03	452,990.55	+15.78
Hong Kong	820,894	751,264	+9.27	Hong Kong	33,712.95	30,406.58	+10.87
Japan	1,544,328	1,439,510	+7.28	Japan	67,512.49	41,560.12	+10.87
Korea	1,709,070	1,464,200	+16.72	Korea	76,195.83	63,772.86	+19.48
Taiwan	572,964	522,273	+9.71	Taiwan	23,898.62	21,559.70	+10.85
Others	69,719	73,141	-4.68	Others	3,089.65	3,176.90	-2.75
Europe	6,511,195	6,174,957	+5.45	Europe	480,776.31	442,745.99	+8.59
Austria	104,732	100,373	+4.34	Austria	7,985.34	7,496.42	+6.52
Belgium	112,214	111,013	+1.08	Belgium	7,634.65	7,434.87	+2.69
Denmark	161,855	165,581	-2.25	Denmark	14,286.88	14,356.02	+0.48
Finland	140,439	124,238	+4.62	Finland	11,579.24	10,777.12	+7.44
France	739,853	738,878	+0.13	France	51,492.13	49,992.91	+3.00
Germany	849,283	837,885	+1.36	Germany	56,346.23	53,961.901	+4.42
Italy	264,429	265,597	-0.44	Italy	17,342.90	16,996.34	+2.04
Netherlands	222,077	235,762	-5.80	Netherlands	16,516.92	17,217.18	-4.07
Norway	127,826	131,039	-2.43	Norway	10,622.05	10,560.18	+0.59
Russia	1,346,219	1,090,083	+23.50	Russia	105,051.19	81,602.73	+28.73
Spain	179,477	168,900	+6.26	Spain	11,316.18	10,381.74	+9.00
Sweden	323,669	168,900	-2.77	Sweden	29,797.27	26,800.95	-0.01
Switzerland	209,434	332,895	+0.18	Switzerland	16,106.72	15,618.53	+3.13
United Kingdom	994,468	209,057	-0.98	United Kingdom	76,619.29	75,578.87	+1.38
East Europe	479,546	1,004,345	+17.04	East Europe	32,498.03	27,076.31	+20.02
Others	255,674	239,589	+6.71	Others	116,583.01	16,894.12	+999.99
The Americas	1,541,520	1,407,458	+9.53	The Americas	116,583.01	103,719.66	+12.40
Argentina	62,953	45,322	+38.90	Argentina	4,698.83	3,312.60	+41.85
Brazil	78,213	67,469	+15.92	Brazil	6,117.12	5,174.85	+18.21
Canada	258,392	244,869	+5.52	Canada	22,120.08	20,555.06	+7.61
USA	1,056,124	975,643	+8.25	USA	77,571.28	69,478.958	+11.65
Others	85,838	74,155	+15.75	Others	6,075.70	5,198.22	+16.88
South Asia	1,770,166	1,523,555	+16.19	South Asia	79,289.47	66,020.69	+20.10
Bangladesh	121,749	100,263	+21.43	Bangladesh	5,584.71	4,545.58	+22.86
India	1,411,942	1,194,508	+18.20	India	62,404.01	50,687.86	+22.86
Nepal	43,242	42,486	+1.78	Nepal	2,109.49	2,071.14	+1.85

Pakistan	81,751	75,308	+8.56	Pakistan	4,224.13	3,843.17	+9.91
Sri Lanka	61,253	69,195	-7.25	Sri Lanka	2,687.45	2,875.52	-6.54
Others	48,22948,229	42,795	+12.70	Others	2,279.68	1,997.42	+14.13
Oceania	938,687	910,901	+3.05	Oceania	73,569.75	69,868.25	+5.30
Australia	817,091	796,370	+2.60	Australia	65,117.97	61,987.58	+5.05
New Zealand	117,893	111,595	+5.64	New Zealand	8,211.32	7,690.84	+6.77
Others	3,703	747,219	+5.70	Others	61,871.54	57,145.62	+8.27
Middle East	789,847	747,219	+5.70	Middle East	61,871.54	57,145.62	+8.27
Egypt	24,096	28,114	-14.29	Egypt	1,638.29	1,923.25	-14.82
Israel	173,679	161,579	+7.49	Israel	15,317.16	13,968.00	+9.66
Kuwait	725,244	61,563	+17.35	Kuwait	6,587.82	5,361.21	+22.88
Saudi Arabia	33,517	24,834	+34.96	Saudi Arabia	2,823.91	2,063.20	+36.87
U.A.E.	137,217	130,941	+4.79	U.A.E.	10,125.97	9,353.61	+8.26
Others	349,094	340,188	+2.62	Others	25,378.39	24,476.35	+3.69
Africa	187,126	172,213	+8.66	Africa	13,119.77	11,805.24	+11.14
S.Africa	93,261	79,172	+17.80	S.Africa	6,805.63	5,646.03	+20.54
Others	93,861	93,041	+0.89	Others	6,314.14	6,159.21	+2.52
Grand Total	35,381,210	32,529,588	+8.77	Grand Total	1,824,042.35	1,633,497.55	+11.66

Source : Tourism and Sport Economic Section, 11 January 2018

Remark : P means fundamental data.

Ministry of Tourism and Sports, Thailand
Guest Arrivals at Accommodation Establishment : Pattaya Chonburi 2016

Nationality	January - December		2015/14
	2016	2015	%Change
Thai	4,168,387	2,375,656	+75.46
Brunei	4,990	2,077	+140.25
Cambodia	5,475	2,947	+85.76
Indonesia	68,120	56,364	+20.86
Laos	3,614	2,273	+59.00
Malaysia	62,194	67,524	-7.89
Myanmar	4,579	3,272	+39.90
Philippines	23,208	19,453	+19.30
Singapore	39,864	30,625	+30.17
Vietnam	172,408	109,628	+57.27
China	2,540,822	1,865,227	+36.22
Hong Kong	166,870	124,903	+33.60
Japan	193,246	148,189	+30.41
Korea	607,637	460,375	+31.99
Taiwan	283,825	210,343	+34.93
Austria	61,410	43,522	+41.10
Belgium	38,274	22,559	+69.66
Denmark	55,536	40,127	+38.40
Finland	66,941	61,944	+8.07
France	103,410	93,508	+10.59
Germany	387,875	395,125	-1.83
Italy	79,982	59,998	+33.31
Netherlands	96,177	91,635	+4.96
Norway	71,649	61,095	+17.27
Russia	821,662	569,442	+44.29
Spain	9,638	5,727	+68.29
Sweden	97,073	87,340	+11.14
Switzerland	70,415	67,303	+4.62
United Kingdom	354,937	344,777	+2.95
East Europe	218,783	205,873	+6.27
Canada	42,956	35,904	+19.64
USA	171,750	155,526	+10.43
India	427,515	354,418	+20.62
Australia	154,383	164,278	-6.02
New Zealand	16,485	18,004	-8.44
Middle East	364,854	348,424	+4.72
Israel	44,718	41,442	+7.91
Africa	19,544	9,762	+100.20
Others	163,573	122,198	+33.86
Grand Total	12,284,770	8,879,767	+38.36
Thai	4,168,378	2,375,656	+75.46
Foreigners	8,116,392	6,503,131	+24.81

Source : Ministry of Tourism and Sports, 3 August 2017

Ministry of Tourism and Sports, Thailand

Statistic of Guest Arrivals at Accommodation Establishment : Pattaya, Chonburi : April – June 2017 (Third period)

Nationality April - June	2017			Q2		2017/16
	Apr	May	June	2017	2016	% Change
Thai	337,076	446,927	436,583	1,220,586	1,106,500	+10.31
Brunei	76	51	65	192	136	+41.18
Cambodia	23	34	29	86	42	+104.76
Indonesia	6,571	5,728	5,413	17,712	12,727	+39.17
Laos	346	481	267	1,084	907	+20.62
Malaysia	6,838	8,724	6,519	22,081	18,191	+21.35
Myanmar	503	942	457	1,902	1,390	+36.83
Philippines	2,493	2,462	2,291	7,246	6,611	+9.61
Singapore	4,038	4,715	3,978	12,431	9,680	+28.42
Vietnam	12,674	10,827	9,806	33,207	25,676	+29.72
China	239,416	230,004	201,473	670,893	649,328	+3.32
Hong Kong	21,697	21,528	12,616	53,841	41,327	+30.28
Japan	20,149	24,899	19,203	64,901	51,799	+25.29
Korea	57,301	50,867	52,143	160,311	135,682	+18.15
Taiwan	30,213	29,819	33,672	96,064	93,577	+2.66
Austria	51,87	4,314	3,948	13,449	10,415	+29.13
Belgium	35,19	3,201	2,675	9,885	8,012	+23.38
Denmark	63,77	4,573	5,644	16,594	14,978	+10.79
Finland	44,34	3,421	3,467	11,322	9,481	+19.42
France	9,837	10,278	8,979	29,094	26,522	+9.70
Germany	37,685	26,717	31,846	96,243	110,112	-12.60
Italy	8,519	5,184	4,851	18,554	14,992	+23.76
Netherlands	9,603	11,458	9,132	30,193	28,663	+5.34
Norway	11,026	6,291	8,573	25,890	21,032	+23.10
Russia	108,268	67,443	62,716	238,427	176,210	+35.31
Spain	1,432	627	948	3,007	2,476	+21.45
Sweden	9,420	10,614	8,698	28,732	22,905	+25.44
Switzerland	8,308	9,425	5,762	23,522	20,791	+13.14
United Kingdom	42,719	34,869	210,736	98,688	116,201	-15.07
East Europe	16,241	15,470	11,824	43,535	37,794	+15.19
Canada	3,677	4,844	3,648	12,169	11,317	+7.53
USA	14,248	15,593	13,090	42,931	49,839	-13.86
India	49,304	57,802	50,673	157,779	124,314	+26.92
Australia	15,251	19,658	10,174	45,083	50,552	-10.82
New Zealand	2,178	1,879	1,072	5,129	6,446	-20.43
Middle East	43,656	43,656	32,534	28,461	104,651	-5.71
Israel	5,117	3,881	3,079	12,077	13,280	-9.06
Africa	2,173	1,426	1,985	5,584	4,611	+21.10
Others	24,839	21,592	24,767	71,198	67,589	+5.34
Grand Total	1,184,787	1,209,646	1,111,850	3,506,383	3,213,097	+9.13
Thai	337,076	446,925	436,583	1,220,586	1,106,500	+10.31
Foreigners	847,711	762,719	675,367	2,285,797	2,106,597	+8.51

Source : Ministry of Tourism and Sports, 5 April 2017

Statistic of Tourists Visiting Pattaya (Chonburi) 2016

	January-December		
	2016	2015	% Change
Visitor	13,696,297	9,849,940	+ 39.05
Thai	5,183,955	2,988,479	+ 72.89
Foreigners	8,512,342	6,851,461	+ 24.24
Tourist	12,701,098	9,223,030	+ 37.71
Thai	4,355,143	2,506,545	+ 73.75
Foreigners	8,345,955	6,716,515	+ 24.26
Excursionist	995,199	626,880	+ 58.75
Thai	828,812	491,934	+ 68.48
Foreigners	166,387	134,946	+ 23.30
Average Length of Stay (Day)*	3.51	3.38	+ 0.13
Thai	2.43	2.59	- 0.16
Foreigners	4.08	3.67	+ 0.41
Average Expenditure (Baht/Person/Day)			
Visitor	4,342,320	4,032,04	+ 7.70
Thai	3,230,370	3,076.21	+ 5.01
Foreigners	4,713,150	4,301.37	+ 9.57
Tourist	4,400,400	4,079.65	+ 7.86
Thai	3,356,290	3,192.42	+ 5.13
Foreigners	4,724,890	4,313.31	+ 9.54
Excursionist	1,737,320	1,666.88	+ 4.23
Thai	1,622,680	1,542.16	+ 5.22
Foreigners	2,308,420	2,121.52	+ 8.81
Revenue (Million Baht)			
Visitor	198,138.64	102,722.63	+ 54.69
Thai	36,864.48	18,695.38	+ 71.59
Foreigners	161,274.16	106,60.69	+ 51.28
ACCOMMODATION ESTABLISHMENTS			
Rooms	58,	40,758	+44.38
Occupancy Rate (%)*	75.92	75.18	+ 0.74
Number of Guest Arrivals	12,284,770	8,878,787	+ 38.36
Thai	4,168,378	2,375,656	+ 75.46
Foreigners	8,116,392	6,503,131	+ 24.81

Remark : * Number of Change

4.29

5.22

2.75

3.18

Source : Ministry of Tourism and Sports, 28 April 2017

Statistic of Tourists Visiting Pattaya (Chonburi) 2017 , Second Period (April – June 2017)

	January-December		
	2017	2016	% Change
Visitor	3,894,869	3,553,157	+ 8.35
Thai	1,514,350	1,397,307	+ 8.38
Foreigners	2,335,519	2,155,850	+ 8.33
Tourist	3,568,011	3,283,762	+ 8.66
Thai	1,269,885	1,163,461	+ 9.15
Foreigners	2,298,126	2,120,265	+ 8.39
Excursionist	281,858	269,431	+ 4.61
Thai	244,465	233,846	+ 4.54
Foreigners	37,393	35,585	+ 5.08
Average Length of Stay (Day)*			
Thai	2.35	2.33	+ 0.02
Foreigners	3.82	3.79	+ 0.03
Average Expenditure (Baht/Person/Day)			
Visitor	5,116.28	4,717.16	+ 8.46
Thai	3,516.46	3,376.69	+ 4.14
Foreigners	5,701.79	5,207.15	+ 9.50
Tourist	5,196.79	4,793.36	+ 8.42
Thai	3,669.72	3,530.73	+ 3.94
Foreigners	5,715.58	5,220.17	+ 9.49
Excursionist	1,753.08	1,679.47	+ 4.38
Thai	1,644.88	1,589.49	+ 3.48
Foreigners	2,460.56	12,270.86	+ 8.35
Revenue (Million Baht)			
Visitor	61,621.58	51,972.10	+ 18.57
Thai	11,353.40	9,943.03	+ 14.18
Foreigners	50,268.18	42,029.07	+ 19.60
ACCOMMODATION ESTABLISHMENTS			
Rooms *	63,445	58,848	+ 7.81
Occupancy Rate (%)	77.16	75.25	+ 1.91
Number of Guest Arrivals	3,506,383	3,213,097	+ 9.13
Thai	1,220,586	1,106,500	+ 10.31
Foreigners	2,285,797	2,106,597	+ 8.51

* Remark : The information of the accommodation in 2017 was studied by National Statistic Office and Ministry of Tourism and Sports

Source : Ministry of Tourism and Sports, 28 April 2017

Table Showing the Comparison of Personal Expenses, distributed by types of expenses in 2016
(January – December 2016)

Pattaya Chonburi

1. Thai Citizen

(Unit : baht/person/day)

Group of Expenses January - December	Tourists			Travellers			Visitors		
	2559	2558	% change	2559	2558	% change	2559	2558	% change
1. Accommodation	899.93	853.79	+5.40	0.00	0.00	+ 0.00	834.57	793.65	+ 5.16
2. Food and Beverage	849.18	808.31	+ 5.06	600.87	572.68	+ 4.92	831.14	791.72	+ 4.98
3. Souvenirs	576.90	554.39	+ 4.06	367.90	348.16	+ 5.67	561.72	539.87	+ 4.05
4. Entertainment	432.25	401.38	+ 7.69	227.94	217.12	+ 4.98	417.41	388.41	+ 7.47
5. Touring within the area	191.92	186.05	+ 3.16	146.60	141.22	+ 3.81	188.63	182.90	+ 3.13
6. Transportation in the area	276.98	266.04	+ 4.11	170.91	161.40	+ 5.89	269.28	258.67	+ 4.10
7. Others	129.13	122.46	+ 5.45	108.46	101.58	+ 6.77	127.62	120.99	+ 5.48
Average Expense:/person/day	3,356.29	3,192.42	+5.13	1,622.68	1,542.16	+ 5.22	3,230.37	9,076.21	+ 5.01

2. Foreigners

(Unit : baht/person/day)

Group of Expenses January - December	Tourists			Travellers			Visitors		
	2559	2558	% change	2559	2558	% change	2559	2558	% Change
1. Accommodation	1,540.25	1,378.83	+ 11.71	0.00	-	+ 0.00	1,532.76	1,371.32	+ 11.77
2. Food and Beverage	1,021.27	938.74	+ 8.79	726.74	662.19	+ 9.75	1,019.84	937.23	+ 8.81
3. Souvenirs	677.02	625.61	+ 8.22	567.23	514.58	+ 10.23	676.49	625.01	+ 8.24
4. Entertainment	730.55	668.68	+ 9.25	427.32	398.23	+ 7.30	729.08	667.21	+ 9.27
5. Touring within the area	282.43	253.85	+ 11.26	196.83	178.89	+ 10.03	282.01	253.44	+ 11.27
6. Transportation in the area	348.29	328.54	+ 6.01	284.22	265.29	+ 7.14	347.98	328.20	+ 6.03
7. Others	125.08	119.06	+ 5.03	106.08	102.34	+3.65	124.99	118.96	+5.07
Average Expense:/person/day	4,724.89	4,313.31	+ 9.54	2,308.42	2,121.52	+8.81	4,713.15	4,301.37	+9.57

Total of Visitors

(Unit : baht/person/day)

Group of Expenses January - December	Tourists			Travellers			Visitors		
	2559	2558	% change	2559	2558	% change	2559	2558	% Change
1. Accommodation	11388.43	1,269.37	+ 9.38	0.00	-	+ 0.00	1,358.14	1,244.33	+ 9.15
2. Food and Beverage	980.47	911.55	+ 7.56	621.92	591.95	+ 5.06	972.65	905.24	+ 7.45
3. Souvenirs	653.29	610.77	+ 6.96	401.23	383.98	+ 4.49	647.79	606.29	+ 6.84
4. Entertainment	659.82	612.96	+ 7.64	261.27	256.11	+ 2.01	651.13	605.92	+ 7.46
5. Touring within the area	260.97	239.72	+ 8.86	154.99	149.33	+ 3.79	258.66	237.94	+ 8.71
6. Transportation in the area	331.38	315.55	+ 5.03	189.85	183.77	+ 3.31	328.30	312.91	+ 4.92
7. Others	126.04	119.77	+ 5.24	108.06	101.74	+ 6.21	125.65	119.41	+5.23
Average Expense:/person/day	4,400.40	4,079.65	+7.86	1,737.32	1,666.88	+ 4.23	4,342.32	4,032.04	+7.70

Source : Ministry of Tourism and Sports

Announced on 28 April 2017

Table Showing the Comparison of Personal Expenses, distributed by types of expenses in 2017
(Second Period : April - June 2017)

Pattaya Chonburi

1. Thai Citizen

(Unit : baht/person/day)

Group of Expenses January - December	Tourists			Travellers			Visitors		
	2560	2559	% change	2560	2559	% change	2560	2559	% change
1. Accommodation	874.77	844.48	+ 3.59	0.00	0.00	+ 0.00	808.57	777.47	+ 4.00
2. Food and Beverage	935.43	896.05	+ 4.39	642.46	614.93	+ 4.48	913.26	873.74	+ 4.52
3. Souvenirs	718.19	694.77	+ 3.37	461.93	451.07	+ 2.41	698.79	675.44	+ 3.46
4. Entertainment	522.36	494.97	+ 5.53	255.23	245.10	+ 4.13	502.14	475.14	+ 5.68
5. Touring within the area	225.65	215.25	+ 4.83	118.65	114.81	+ 3.34	217.55	207.28	+ 4.95
6. Transportation in the area	346.07	310.12	+ 1.92	135.45	133.09	+ 1.76	302.39	296.07	+ 2.13
7. Others	77.25	75.09	+ 2.88	31.18	30.49	+ 2.26	73.76	71.55	+ 3.09
Average Expense:/person/day	3,669.72	3,530.79	+ 3.94	1,589.49	1,542.16	+ 5.22	3,516.46	3,376.69	+ 4.14

2. Foreigners

(Unit : baht/person/day)

Group of Expenses January - December	Tourists			Travellers			Visitors		
	2559	2558	% change	2559	2558	% change	2559	2558	%c Change
1. Accommodation	2,474.86	2,258.62	+ 9.57	0.00	0.00	+ 0.00	2,464.38	2,248.65	+ 9.59
2. Food and Beverage	1,246.27	1,114.43	+ 11.83	978.25	895.63	+ 9.22	1,245.13	1,113.47	+ 11.82
3. Souvenirs	687.67	634.86	+ 8.32	490.75	452.12	+ 8.54	686.84	634.05	+ 8.33
4. Entertainment	656.32	595.39	+ 10.23	425.67	385.63	+ 10.38	655.34	594.46	+ 10.24
5. Touring within the area	281.26	265.44	+ 5.96	293.97	274.02	+ 7.28	281.31	265.48	+ 5.96
6. Transportation in the area	310.52	296.26	+ 4.81	243.46	235.62	+ 3.33	310.23	295.99	+ 4.81
7. Others	58.68	55.17	+ 6.36	28.46	27.84	+ 2.23	58.56	55.05	+ 6.38
Average Expense:/person/day	5,715.58	5,220.17	+ 9.49	2,460.56	2,270.66	+8.35	5,701.79	5,207.15	+ 9.50

Total of Visitors

(Unit : baht/person/day)

Group of Expenses January - December	Tourists			Travellers			Visitors		
	2559	2558	% change	2559	2558	% change	2559	2558	%c Change
1. Accommodation	2,069.11	1,901.37	+ 8.82	0.00	0.00	+ 0.00	2,020.74	1,854.83	+ 8.94
2. Food and Beverage	1,167.45	1,059.26	+ 10.21	687.00	652.00	+ 5.37	1,156.22	1,049.30	+ 10.19
3. Souvenirs	695.41	649.99	+ 6.99	465.75	451.21	+ 3.32	690.04	645.13	+ 6.96
4. Entertainment	622.35	570.02	+ 9.18	277.84	263.66	+ 5.36	614.29	562.52	+ 9.20
5. Touring within the area	267.16	252.76	+ 5.70	141.91	135.83	+ 4.48	264.23	249.90	+ 5.73
6. Transportation in the area	311.92	299.76	+ 4.06	149.76	146.63	+ 2.13	308.13	296.01	+ 4.09
7. Others	63.39	60.20	+ 5.30	30.82	30.14	+ 2.26	62.63	59.47	+ 5.31
Average Expense:/person/day	5,916.79	4,793.36	+ 8.42	1,753.08	1,679.47	+ 4.38	5,116.28	4,717.16	+ 8.46

Source : Ministry of Tourism and Sports

Announced on 28 April 2017

Local Unit Finance (Pattaya City)

Authentic Revenue – Authentic Payment of Pattaya City : 2015 – 2017

Descriptions	2015	2016	2017
Authentic Revenue	3,786,514,998.87	3,645,475,656.69	3,857,229,240.58
Authentic Payment	3,293,551,792.27	3,303,652,224.18	3,222,741,045.59
Authentic Revenue is More than Authentic Payment	4,92,963,206.60	341,823,432.51	634,488,194.99

Source : The Office of Pattaya City Finance

October 2017

Chart Showing the Statistic of Authentic Revenue – Authentic Payment of
Pattaya City : 2015 – 2017

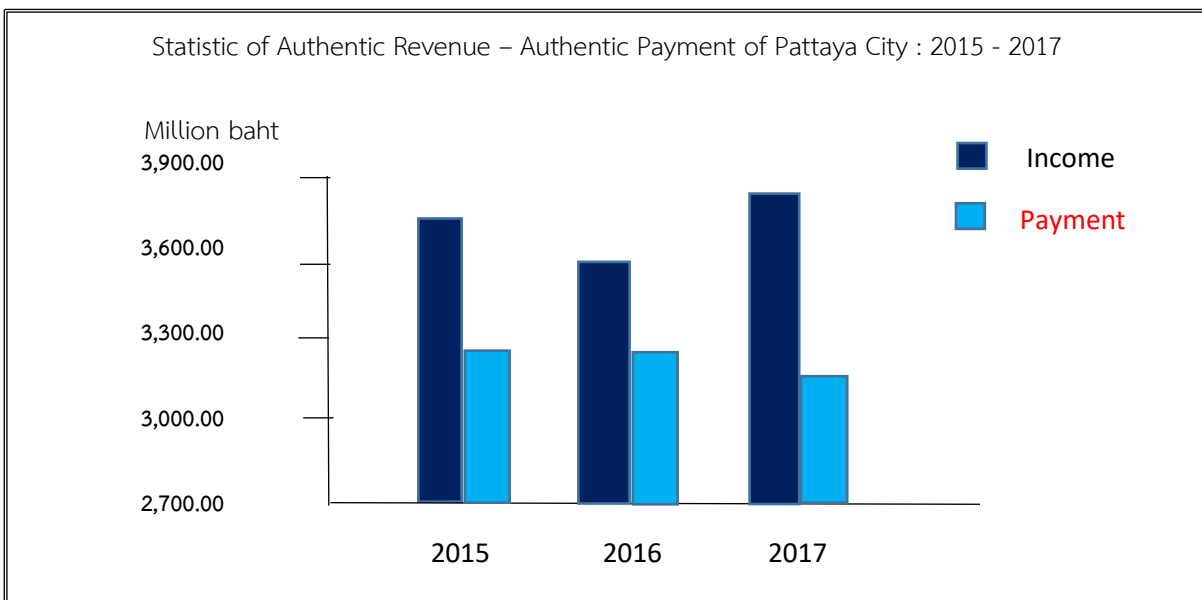


Table Showing Total Authentic Revenues, Budget Year 2015 -20170.

Description	Fiscal Year 2015	Fiscal Year 2016	Fiscal Year 2017
Kor. Revenues			
1. Tax groups	406,692,091.84	428,831,240.06	495,908,905.12
2. Fees, Fines, and License	132,849,029.88	136,978,978.61	177,460,935.87
3. Revenues from assets	60,459,011.15	69,811,112.88	46,620,852.09
4. Revenues from infrastructure and commercial	3,217,178.83	2,766,100.78	2,347,341.65
5. Revenues from others	27,325,163.62	14,964,961.70	13,684,619.48
6. Providing tax	1,657,195,647.55	1,376,629,262.66	1,539,031,971.37
Total revenues of 6 items and others	2,287,738,122.87	2,029,981,656.69	2,275,054,625.58
Total of supportive budget with fixed objective (Budgeting Office)	1,498,775,876.00	1,615,494,000.00	1,582,174,615.00
Grand Total	3,786,514,988.87	3,645,475,656.69	3,857,229,240.58

Source : Office of Finance, Pattaya City

October 2017

Table Showing Total Authentic Expenses, Budget Year 2012 -2016

Description	Fiscal Year 2015	Fiscal Year 2016	Fiscal Year 2017
1. Expenses of Central Budget	89,948,874.07	101,600,456.08	63,102,319.11
2. Expenses of work units	1,718,543,839.60	1,618,730,247.08	1,590,910,660.49
3. The expenses of supportive budget with fixed objective	1,485,059,078.60	1,583,321,521.02	1,568,728,065.99
4. The expenses that entirely paid from collective budget	-	-	-
5. Expenses of loan	-	-	-
Total Expenses	3,293,551,792.27	3,303,652,224.18	3,222,741,045.59

Status of Finance of Pattaya City in the Fiscal Years 2015 – 2017

Fiscal Year	Bank	Type of Deposit			Provincial Finance	Total
		Fixed Deposit	Savings	Current		
2015	GSB	1,514,419,257.36	747,124,571.74	-	-	2,941,339,350.89
	Krung Thai	389,218,558.06	189,979,002.80	4,782,253.97		
	GHB	73,806,423.64	-	-		
	BAC	22,009,283.32	-	-		
2016	GSB	1,230,080,585.20	897,436,613.15	-		2,843,891,385.85
	Krung Thai	390,783,000.84	223,973,252.93	4,782,253.97		
	GHB	74,505,221.22	-	-		
	BAC	22,330,431.54	-	-		
2017	GSB	1,443,730,608.97	1,059,454,918.07	-		3,185,755,532.31
	Krung Thai	492,119,050.39	91,246,437.90	2,053.97		
	GHB	76,461,424.78	-	-		
	BAC	22,741,038.13	-	-		

Source : Department of Finance, Pattaya City

October 2017

The capability of financial and fiscal status of Pattaya City is able to support itself with the revenues from 7 sources which are 1. taxes, 2. fees, fines and issuing license, 3. assets, 4. Infrastructure and commercial, 5. Miscellaneous, 6. supported budget, 7. Other incomes and 8. Loans.

The expense of Pattaya City is divided into two types which are central expenses and work unit expenses.

The central expenses are paying debt (loan) and interests, fixed expenses, reserved budget, and pension collection.

The work units expenses are divided into two types as follows:

1. Regular expenses which are salary, permanent wages, temporary wages, payment in return and material, supported money, and other expenses.
2. Investment expenses which are permanent material, land and construction

Commercial Management

Management of Pawn Shop from 2015 – 2017

Items	2015	2016	2017	Increase/ Decrease
1. Circulated Money	70,158,468.37	74,768,636.33	78,680,872.00	+5.23
2. Values of pawned properties	86,185,700.00	74,317,500.00	76,709,800.00	+3.22
3. Net profit	9,220,335.93	7,824,472.17	6,097,114.00	-22.08
4. Values of pawned properties over due date	9,262,100.00	5,074,800.00	3,729,200.00	-26.52
5. Number of service users	14,367	12,322	12,382	+0.49

Receive and Payment of Pattaya City Pawn Shop from 2015 – 2017

Items	2015	2016	2017	Increase/ Decrease
Real incomes	12,958,678.99	11,316,243.32	9,663,029.02	-14.61
Real expenses	3,738,343.06	3,491,771.15	3,565,915.38	+2.12
Real incomes more than real expenses	9,220,335.93	7,824,472.17	6,097,113.64	-22.08

Source : Pawn Shop of Pattaya City : February 2018

Social
Aspect

Social Aspect

Pattaya City is an important tourist city which is worldwide known, so many Thai and foreign tourists come to visit. This makes a great change of community to be the community of commercial providing services to tourists. There are 42 communities in Pattaya City and some are still living on agriculture, and fishing. It is found out that there are people moving from other regions to live and work in Pattaya City. This causes the community become complicated and there are various religions, languages, cultures, traditions, and ways of life.

1. Religion

The majority or 80% of people in Pattaya are Buddhists, then 16% of people are Muslims, 2% are Christians, and 2% are others. There are 24 important religious places for each religion to perform activities as follows:

Monasteries in Pattaya City

1. Wat Chaimongkol Moo 10 Norngrue Tel. 038-427030, 038-428277
2. Wat Tamsamakee Moo 10 Norngrue Tel. 038-428399
3. Wat Boonkanchanararm Moo 12 Norngrue Tel. 038231449
4. Wat Chonglom Naklua Moo2 Naklua Tel. 038-221278
5. Wat Poetisumpan Moo 5 Naklua Tel.038-225452
6. Wat Sawangfapuetararm Moo4 Naklua Tel. 038-221552
7. Wat Norngyai Moo 6 Naklua Tel. 038-421993
8. Wat Maisamrarn (Koa Larn) Moo7 Naklua Tel. 038-429951
9. Wat Puttiwarararm Moo 6 Nornngplalai Tel. 038-221990
10. Wat Intanarrarm Moo 4 Huay Yai Tel. 038-239701
11. Wat Kratuengtorng Moo 12 Jomtian Beach Tel. 038-756124
12. Jittaparwanwittayalai Moo 1 Norngrue Tel. 0038-221131
13. Wat Kaoprayai Pratamnak Rd. Norngrue

House of Priest

1. Norngr-or House of Priest 31 Moo9 Norngrue Tel. 038-424415

Mosques in Pattaya City

1. Darulibadha Mosque Moo 9 Norngrue
2. Tayatusarsarkirin Mosque Moo 6 Naklua

- | | |
|-----------------------------|------------------|
| 3. Nurhulyarkin Mosque | Moo 5 Norngprue |
| 4. Tor-atillah Mosque | Moo 10 Norngprue |
| 5. Darul-ubror Mosque | Moo 5 Norngprue |
| 6. Chaekmoohumadalee Mosque | Moo 6 Norngprue |
| 7. Yarmee-ulhislam Mosque | Moo 6 Norngprue |

Christ Churches

1. Catholic Church
 - 1.1 St. Nicholas Church Tel. 038-716401
2. Protestant Church
 - 2.1 Pattaya Christ Tel. 038-429004
 - 2.2 Nimitmai Samakeetum Church

2. Population

Population is the human resource that is changeable all the time and this can affect economic system, man power, the use of land, the use of natural resources and public utility. This is the important section of making development plan of the local government in the aspect of economic system management, social management, man power management, the use of land management, and the use of natural resources management to be effective and get along with good quality of life in the future.

Statistic Presenting Number of Population in Pattaya City Area

Based on housing register 2007 – 2017

Year	Number of Population Total	Male (person)	Female (person)	Housing
2007	102,612	48,438	54,174	18,948
2008	104,797	49,241	55,556	19,326
2009	106,214	49,589	56,625	19,702
2010	107,944	50,184	57,760	20,267
2011	109,037	50,551	58,486	20,582
2012	110,491	51,173	59,318	20,756
2013	111,910	51,639	60,271	21,122

2014	114,192	52,561	61,631	21,844
2015	115,840	53,239	62,601	22,255
2016	117,371	53,883	63,488	22,803
2017	118,511	54,306	64,205	23,969

****Note :** There are approximately 4 or 5 times of unregistered population over registered population.

Source : Registration and Citizen ID Section, Office of the Permanent Secretary of Pattaya City
(February 2018)

Statistic of Population in Pattaya City in 2014 - 2017

Population	2015	2016	2017	Increasing	% (+/-)
All Population	115,840	117,371	118,511	1,140	+0.96
Male Population	53,239	53,883	54,306	423	+0.78
Female Population	62,601	63,488	64,205	717	+1.12
Number of Households	22,255	22,803	23,969	1,166	+4.86

Statistic of Population on Koa Larn in 2014 – 2016

Population	2015	2016	2017	Increasing	% (+/-)
All Population	2,854	2,869	2,912	43	+1.48
Male Population	1,413	1,428	1,438	10	+0.70
Female Population	1,441	1,441	1,474	33	+2.24
Number of Households	627	625	619	(-6)	(-0.97)

Statistic of Population In Pattaya City Area (in January 2017)

Populations	Male	Female	Total
Tambon Nong Prue	29,923	37,153	67,076
Tambon Nong Pla Lai	1,061	1,204	2,265
Tambon Huay Yai	72	93	165
Tambon Na Klua (Include Koa Larn)	23,250	25,755	49,005
- Koa Larn (Moo.7 Tambon Ka Klua)	1,438	1,478	2,916
Total	54,306	64,205	118,511

The average of people per area

2,218 person/km² (Area 53.44 km²)

The average of people (Koa Larn) per area

715 person/km² (Area 4.07 km²)

Number of Households (Owner) in 2017

Area	Number of Households
Tambon Nong Prue	14,732
Tambon Nong Pla Lai	503
Tambon Huay Yai	29
Tambon Na Klua	8,086
- Koa Larn	619
Total number of household	23,969

1 household comprises of 5 people.

Number of Houses in January 2017

Area	Number of Houses
Tambon Nong Prue	11,8505
Tambon Nong Pla Lai	1,295
Tambon Huay Yai	39
Tambon Na Klua	36,745
- Koa Larn	1,328
Total number of houses	156,584

Statistic Presenting Number of New Born Baby from 2015 – 2017

Number of New Born Baby	2015	2016	2017
Male	2,605	2,644	2,591
Female	2,582	2,422	2,532
Total	5,187	5,086	5,123

Statistic Presenting Number of Death from 2015 – 2017

Number of Death	2015	2016	2017
Male	907	999	917
Female	390	428	463
Total	1,297	1,427	1,380

It can be seen from the official statistic table illustration that the population of Pattaya City is not crowded, however, the population of Pattaya City is very crowded as Pattaya City is a famous tourist city that meets a rapid growth and more people from other regions move into the area of Pattaya City to earn their livings. This makes the number of unregistered population increasing sharply 4 times of the real registered population (approximately 400,000 – 500,000). They come to live in Pattaya without official informing according to the house registering laws.

Numbers of Voters in General Election from 2015 – 2017

Numbers of Voters	2015	2016	2017
Males	33,205	33,489	33,737
Females	43,906	44,566	45,106
Total	77,111	78,055	78,843

Statistic Showing Pattaya Mayor Election from 2004 – 2012

Year	Number of Voters	Acting Voters	%	Increase/Decrease
2004	56,681	28,986	51.14	-
2008	64,735	33,035	51.03	-0.11
2012	69,295	38,724	41.51	-9.52

Statistic Showing Pattaya Council Memmer Election from 2004 – 2012

Year	Number of Voters	Acting Voters	%	Increase/Decrease
2004	55,209	28,815	52.19	-
2008	64,036	32,791	51.21	-0.98
2012	68,717	28,640	41.68	-9.53

3. Community Aspect

There are 42 communities in Pattaya City as follows:

1. Kratinglai Community	22. Watboonkanjanaram Community
2. Koa Larn Community	23. Tonkrabok Community
3. Kao Talo Community	24. Rongmaikeed Community
4. Kaonoi Community	25. Norngtabaek Community
5. Soi Korpai Community	26. Norngpangkae Community
6. Norng-or (Chunsai) Community	27. Norngyaibon Community
7. Soi Praisanee Community	28. Walking Street Community
8. Soi Hartanwar Community	29. Charoensukpattana Community
9. Soi Hok Yotsak Community	30. Barnmerntangrod fai Community
10. Talardkao Naklua Community	31. Barnkrabok 33 Community
11. Teppasit Community	32. Choomsai Community
12. Tapparaya Community	33. Pattayataipattana Community
13. Barnhuatoon Community	34. Chaiyapornwitee Community
14. Pattayaklang Community	35. Norngyailang Community
15. Poetisampun Community	36. Norngyaikaownar Community
16. Rungrueng Community	37. Arunotai Community
17. Roi-lang Community	38. Chaiyapuek Community
18. Larnpoe Community	39. Marbpradoo Community
19. Wat Chaimongkol Community	40. Laenrachawed Community
20. Wat Chonglom Community	41. Bongkote Community
21. Wat Tamsamakkee Community	42. Paniadchang Community

Source : Department of Social Development, Pattaya City (February 2017)

**Statistic Showing Numbers of Population in Pattaya City Distributed
by Communities in 2017**

Community	Male	Female	Total	Community	Male	Female	Total
1. Soi 6 Yotsak	106	106	212	22. Wat Tamsamakee	1,522	1,724	3,246
2. Teprasit	162	184	346	23. Central Pattaya	681	773	1,454
3. Poetisampan	928	941	1,869	24. Soi Praisanee	840	946	1,786
4. Rungrueng	391	498	889	25. Tonkrabok	236	274	510
5. Larnpoe	373	410	783	26. Tappraya	1,151	1,148	2,569
6. Watbunkanjanararm	2,431	3,046	5,477	27. Koa Larn	1,383	1,392	2,775
7. Norngpangkae	512	616	1,128	28. Walking Street	365	409	774
8. Roilung	644	818	1,462	29. Charoensukpattana	379	408	787
9. Norngtabaek	464	602	1,066	30. Barn-nerntanglodfai	192	259	451
10. Kaotalo	170	205	375	31. Barnkrabok 33	617	639	1,310
11. Norng-or	449	465	914	32. Chumsai	1,248	1,693	2,941
12. Khaonoi	1,126	1,495	2,621	33. Pattayatai Pattana	655	735	1,390
13. Kratinglai	576	613	1,189	34. Chaipornwitee	650	728	1,378
14. Wat Chaimongkon	390	410	800	35. Norngyai Barnlarng	399	427	826
15. Talardkao Naklua	1,140	1,288	2,428	36. Pattayanua	587	730	1,317
16. Wat Chonglom	364	383	747	37. Arunotai	908	1,179	2,087
17. Norngyai Barnbon	404	490	894	38. Chaiyapuek	635	835	1,470
18. Soi Har Tanwa	309	329	638	39. Marbpradoo	634	766	1,400
19. Barnlongmaiheed	1,169	1,296	2,465	40. Laemrachawet	896	1,111	2,007
20. Soi Korpai	1,238	1,450	2,688	41. Bpngkot	244	347	591
21. Barn Huatoong	461	483	944	42. Paniadchang	524	498	1,022

**Not specify the communities
Male 25,753
Female 30,732
Total 56,485

Source : Registration and Citizen ID Section,
Office of the Permanent Secretary of Pattaya City

Social Work and Social Welfare

Pattaya City sets up the office of social development to coordinate with other social work organizations to help one who is disadvantaged, elders and children in many aspects. There is a mobile public health to service people in the community including promoting the activities to help people in the community to help themselves.

Pattaya City also copes with the problems of beggars and young tramps to save Pattaya City Image as follows:

- Misbehaved children in Pattaya City area will be sent to Eastern Child Protection Center, Rayong Province.
- The tramps and beggars who are Thai will be sent to Homeless Care Center, Department of Public Welfare, Pakkred, Nontaburi Province.
- The aliens, mostly Cambodian, Laotain, and Burmese who illegally live in Thailand will be sent to Pattaya Immigration Office.
- The elders who can't help themselves will be sent to Banglamung Foster Home.
- There is also assistance for children, women, elders, disables and AIDS patients.
- In 2017 fiscal year, 8,416 elders have received their pensions for living.
- In 2017 fiscal year, 1,258 disables have received their pensions for living.
- In 2017 fiscal year, 312 AIDS patients have officially registered.

Source : Department of Social Development, Pattaya City : February 2017

Houses for Elders, Tramps and Other Supports

<u>Types of Assistant Units</u>	<u>Place/Telephone</u>
<u>1. The temporary house for children and women who have problems and are in troubles.</u>	<u>Chonburi House for children and family, Chonburi Province. Tel. 038-240220</u>
<u>2. The place for protecting and assisting homeless people and beggars.</u>	<u>The Center of Protecting Homeless People Chonburi, Tel. 038-234430</u>
<u>3. The place for helping and protecting children between 7 – 18 years of age.</u>	<u>Banlamung Male Child Foster Home. Tel 038-241373</u>

4. <u>The place for supplying appropriate social welfare following Protecting Children Act 2003.</u>	<u>Chonburi Center of Child Development.</u> <u>Tel. 038-234402</u>
5. <u>The place for looking after female disables who are 18 years up.</u>	<u>“Karoonyawet” Foster Home for Disables</u>
6. <u>The place for looking after elders over 60 years old.</u>	

4. Education

Pattaya City takes an account on the importance of education and development of education to meet quality standards, so Pattaya City has established 11 schools under Pattaya City together with 2 child-care centers located in different areas of the city including Koa Larn. 10 schools teach students from Pratomsuksa 1 – 6 (Grade 1 – 6) and Mattayomsuksa 1 – 3 (Grade 7 – 9) and the other one is as a demonstration school teaching students until Mattayomsuksa 6 (Grade 10 – 12) to help students to sit the entrance examination. There are both government schools and private schools in Pattaya City as follows:

Schools under Pattaya City

1. Two Pattaya City pre-school child training centers:
 - Wat Chaimonkol pre-school child training center, South Pattaya Street, Norngrue, Tel. 038-420436
 - Darulibadha Mosque pre-school child training center, Sukumvit Road Norngrue, Tel. 038-716796
2. Eleven Pattaya City Schools teaching students from kindergarten level to Mattayomsuksa level as follows:
 - 2.1 Muang Pattaya School 1. It is located at 58 Sukumvit Road, Nongplalai, Banglamung, Chonburi established since 1955 teaching students from pre-school child level to Mattayomsuksa 3 (Grade 9) with 846 students, 23 classrooms. The rate of students per one classroom is 37. The telephone number is 66-38 221267.

- 2.2 Muang Pattaya School 2. It is located at 5 Sukumvit Road, Narklua, Banglamung, Chonburi close to Banglamung District Office established since 1923 teaching students from pre-school child level to Mattayomsuksa 3 (Grade 9) with 1,241 students, 41 classrooms. The rate of students per one classroom is 31. The telephone number is 66-38 221264.
- 2.3 Muang Pattaya School 3. It is located at 250 Sukumvit Road, Narklua, Banglamung, Chonburi established since 1936 teaching students from pre-school child level to Mattayomsuksa 3 (Grade 9) with 1,411 students, 42 classrooms. The rate of students per one classroom is 34. The telephone number is 66-38 222265.
- 2.4 Muang Pattaya School 4. It is located at 23/4 Sukumvit Road, Nongplalai, Banglamung, Chonburi established since 1938 teaching students from pre-school child level to Mattayomsuksa 3 (Grade 9) with 1,001 students, 28 classrooms. The rate of students per one classroom is 36. The telephone number is 66-38 429266.
- 2.5 Muang Pattaya School 5. It is located at 15 Sukumvit Road, Nongplue, Banglamung, Chonburi established since 1951 teaching students from pre-school child level to Mattayomsuksa 3 (Grade 9) with 1,552 students, 45 classrooms. The rate of students per one classroom is 35. The telephone number is 66-38 429268.
- 2.6 Muang Pattaya School 6. It is located at 58 Soi Wat Tamsamakee, Nongplue, Banglamung, Chonburi established since 1957 teaching students from pre-school child level to Mattayomsuksa 3 (Grade 9) with 1,314 students, 36 classrooms. The rate of students per one classroom is 37. The telephone number is 66-38 429296.
- 2.7 Muang Pattaya School 7. It is located at 87 Sukumvit Road, Nongplue, Banglamung, Chonburi established since 1955 teaching students from pre-school child level to Mattayomsuksa 3 (Grade 9) with 2,310 students, 61 classrooms. The rate of students per one classroom is 38. The telephone number is 66-38 231796.

2.8 Muang Pattaya School 8. It is located at 26 Sout Pattaya Road, Nongplue, Banglamung, Chonburi and established since 1943 teaching students from pre-school child level to Mattayomsuksa 3 (Grade 9) with 2,221 students, 69 classrooms. The rate of students per one classroom is 33. The telephone number is 66-38 429295.

2.9 Muang Pattaya School 9. It is located at 152 Pattaya - Naklua Road, Nongplue, Banglamung, Chonburi established since 1955 teaching students from pre-school child level to Mattayomsuksa 3 (Grade 9) with 1,698 students, 48 classrooms. The rate of students per one classroom is 36. The telephone number is 66-38 225249.

2.10 Muang Pattaya School 10. It is located at 209 Naklua, Banglamung, Chonburi and it has been established since 1955 teaching students from pre-school child level to Mattayomsuksa 3 (Grade 9) with 1,698 students, 48 classrooms. The rate of students per one classroom is 36. The telephone number is 66-38 429941.

2.11 Muang Pattaya School 11. It is located at 37/66 Moo 6 Naklua, Banglamung, Chonburi and established since 2009 teaching students from pre-school child level to Mattayomsuksa 3 (Grade 9) with 1,127 students, 31 classrooms. The rate of students per one classroom is 37. The telephone number is 66-38 420911.

**The 2017 Statistic Showing the Numbers of Students Studying in Schools of
Pattaya City**

Schools of Pattaya City	Pre-school Level		Pratomsuksa Level (G 1 – G 6)		Mattayomsuksa Level (G 7 – G 12)		Total Amount	
	Room	Student	Room	Student	Room	Student	Room	Student
Muang Pattaya 1	6	178	12	362	7	259	25	799
Muang Pattaya 2	11	276	24	744	6	219	41	1,239

Muang Pattaya 3	9	266	24	798	9	322	42	1,386
Muang Pattaya 4	7	236	15	537	6	214	28	987
Muang Pattaya 5	9	246	24	941	12	365	45	1,552
Muang Pattaya 6	9	310	18	750	9	340	36	1,400
Muang Pattaya 7	15	455	34	1,202	17	598	66	2,255
Muang Pattaya 8	8	186	42	1,501	15	474	65	2,161
Muang Pattaya 9	9	305	30	1,066	9	306	48	1,677
Muang Pattaya 10	5	122	6	202	3	72	14	396
Muang Pattaya 11	0	0	0	0	32	1,205	32	1,205
	88	2,580	229	8,103	125	4,374	442	15,057

Source: Office of Education, Pataya City (2018)

Schools under Secondary Education Service Area Office 38

1. Poetisampanpittayakarn School, teaching students from Mattayomsuksa 1 to 6 (Grade 7 – 12) located on Pattaya – Naklua Road, Naklua, Tel. 038-225211
2. Banglamung School, teaching students from Mattayomsuksa 1 to 6 (Grade 7 – 12) located on Sukumvit Road, Naklua, Banglamung District Tel. 038-221620

Schools under Office of Private School Commission

There are 16 private schools teaching students from kindergarten level and Mattayomsuksa level as follows:

Kindergarten Level

- Anubarn Karnjana, Moo 5, Pattaya – Naklua Road Naklua, Banglamung, Tel. 038 – 428938.
- Anubarn Boonpueng, Pattaya – Naklua, Naklua, Banglamung, Tel. 038-221232.
- Anubarn Sotpattana, 384 Moo 4, Sukumvit Road, Naklua, Banglamung, Tel. 038 – 42346
- Anubarn Wayupak, 159/113 Moo 6, Naklua, Banglamung, Tel. 084 – 7795554

Kindergarten and Primary Level

1. Aksorn Pattaya School. Norngprue, Banglamung, Tel 038 – 374532
2. Aksorn Teppasit School. Moo 11 Norngprue, Banglamung, Tel. 038 – 412118
3. Tantraluk School. Moo 6, Pattaya No.3 Road, Naklua, Banglamung, Tel. 038 – 422636
4. Burapapattanasart School. Moo 13 Sukumvit Road, Norngprue, Banglamung, Tel. 038 – 420848
5. Wuttichot School. Moo 6, Sukumvit Road, Naklua, Banglamung, Tel. 038 – 428849
6. Pattaya Arunotai School. Moo 9 Central Pattaya Road, Norngprue, Banglamung, Tel. 038 – 421316

Kindergarten and Secondary Level

1. Julatep School. Moo2 Sukumvit Road, Naklua, Banglamung. Tel. 038 – 221418
2. Udonsuksa Demonstration School. 54/41 Sukumvit Road, Norngprue, Banglamung, Tel. 038 – 232902
3. Barnrod fai School. Moo 6 Norngprue, Banglamung, Tel. 038 – 428615
4. Mariwit School. Sukumvit Road, Naklua, Banglamung, Tel. 038 – 222477
5. Mahartai School for the Blinds Pattaya. 285/103 Pattay-Naklua Road,
6. Naklua Banglamung, Tel. 038 – 225479
7. Pattaya International School/Pattaya International School/82 Moo 6 Sukumvit Road, Naklua, Banglamung, Tel 038 – 428849

Primary and Secondary Level

1. Asornsuksa. Moo 5 Pattaya – Naklua Road, Naklua, Banglamung, Tel. 038 – 428938

Vocational College Level

School under the Commission of Vocational Education

1. Pattaya Technic College. Teaching certificate and higher certificate level located at 15/17 Soi Watnornkateyai, Naklua, Banglamung, Tel 038-222118

School/College under Office of Private School Commission

1. Technology Pattaya Commercial College. (Certificate level). 119 Pattaya – Naklua Road, Naklua, Banglamund, Tel. 038-423938
2. Technology Pattaya Business Administration College. (Higher Certificate Level). 119 Pattaya – Naklua Road, Naklua, Banglamund, Tel. 038-423938
3. Aksorn Pattaya Technology College. (Certificate and Higher Certificate Level). Moo 11 Teppasit Road, Norngprue, Banglamung, Tel. 038-300164-5
4. Technology Kingston Pattaya College. (Certificate and Higher Certificate Level) 297/1-5 Moo 6 Naklua, Banglamung, Tel. 038-422126
5. Technology Mahartai Pattaya College. (Certificate Level). 440 Moo 9 Sukunvit Road, Norngprue, Banglamung. Tel. 038-716247-9

University Educational Institutes nearby

1. National Institute of Development Administration (NIDA). Located at the College of Ministry of Interior, Banglamung, Banglamung, Tel 038-240245 (outside the area of Pattaya City)
2. Thammasart University, Pattaya Center. Located at 39/4 Moo 5 Pong, Banglamung, Chonburi, Tel. 038-259050-5
3. Kasetsart University, Au-udom Campus. Located at 199 Moo 6 Tungsukla Siracha, Chonburi, Tel. 038-354580-6
4. Eastern Technology, Bangpra Campus. Located at 43 Moo 6 Bangpra, Siracha, Chonburi, Tel. 038-358201
5. Burapha University. Located at 169 Longhard Bangsaen Road, Saensuk, Muang, Chonburi, Tel. 038-102222. (outside the area of Pattaya City)

6. Sripatum University, Chonburi Campus. Located at 79 Bangna-Trad Road, Klongtamru, Muang, Chonburi, Tel. 038-743690-9. (outside the area of Pattaya City)

5. Important Local traditions

1. Making merit on New Year's Day	31 Dec. – 1 Jan.
2. Wanlai Naklua (Songkran Festival)	18 Apr.
3. Wanlai Pattaya (Songkran Festival)	19 Apr.
4. Kong Kaw Naklua	20 Apr.
5. Kong Kaw Norngyai	20 Apr.
6. Visakabucha (Religious event)	10 May
7. Arsarnhabucha (Religious event)	8 Jul.
8. Buddhist Lent (Religious event)	9 Jul.
9. King Rama V Birthday	23 Oct.
10. Pattaya Establishment Day	29 Nov.
11. Taksin the Great Day	28 Dec.

6. Sports and Leisure

There are many places to play sports and have leisure in Pattaya City for people and tourists. Most of these places are located in schools in Pattaya City including public parks as follows:

- 8 multi purposes sport stadiums
- 4 football fields
- 11 basketball fields
- 10 trakraw courts
- 2 swimming pools
- 16 children playgrounds
- 1 indoor stadium

7. Public Health

There are 5 hospitals for servicing patients in the area of Pattaya City. These hospitals are government hospital, private hospital and hospital under Pattaya City.

* **Government Hospital**

1. **Banglamung Hospital.** It is located at 669 Moo 5, Pattaya – Naklua Road, Naklua, Banglamung, Chonburi Province 20150. The telephone number is 038-423835, 038-426702, 038-726220.

- Number of beds 250

Medical Staff are:

- Physicians	76
- Dentists	13
- Professional Nurses	287
- Pharmacists	27
- Dental care officers	10
- Public health personnel	9
- Others	

Number of patients receiving medical treatment in 2017 are as follows:

- In patients	217,136
- Out patients	152,875
- Frequent visits	547,752 times
- Accident	23,265 cases : year

Top 5 diseases that are mostly cured are:

1. AIDS
2. Cold
3. High Blood Pressure
4. Diabetes
5. Diseases caused by using addicting drugs

Source : Banglamung General Hospital

February 2018

*Private Hospitals

There are 3 private hospitals in Pattaya City as follows:

1. **Bangkok Pattaya Hospital.** It is located at 301 Moo 6 Sukumvit Road, Naklua, Banglamung, Chonburi 20150. The telephone number is 038-259999.

Number of beds 300

Medical staff are:

- Physicians 125 and 265 part time
- Dentists 13 and 26 part time
- Nurses 434
- Pharmacists 37
- Other staff 943

Number of patients receiving medical treatment in 2017 are as follows:

- In patients 24,470
- Out patients 437,578
- Frequency of visits 91,424 times
- Accidents 32,517 cases : year

Top 5 diseases that are mostly cured are:

1. Stomach and intestine
2. Flu
3. Serious bronchitis
4. Sudden Pharyngitis
5. Sudden Gastritis

Source : Bangkok Pattaya Hospital

February 2018

2. **Pattaya Memorial Hospital.** It is located at 328/1 Moo 9 Central Pattaya Road, Norngprue, Banglamung, Chonburi 20150. The telephone number are 038-488777, 038-427742

Number of beds 50

Medical staff are:

- Physicians 14
- Dentists 1

- Nurses 44
- Pharmacists 6

Number of patients receiving medical treatment in 2017 are as follows:

- In patients 3,671
- Out patients 81,767
- Frequency of visits 91,424 times
- Accidents 40,475 cases : year

Top 5 diseases that are mostly cured are:

1. Sudden Diarrhea
2. Inflected Up-Respiratory
3. High Blood Pressure
4. Diabetes
5. AIDS

Source : Pattaya Memorial Hospital

February 2018

3. **Pattaya Inter Hospital.** It is located at 255/4 Moo 9 Soi Pattaya 4, Pattaya No.2 Road, Norngrue, Banglamung, Chonburi 20150. The Telephone numbers are 038-428374 and the fax number is 038-422773.

Number of beds 80

Medical staff are:

- Physicians 3
- Dentists 3
- Nurses 33
- Pharmacists 13
- Other officers

Number of patients receiving medical treatment in 2016 are as follows:

- In patients 971
- Out patients 43,393
- Frequency of visits 43,393
- Accidents 863 cases : year

Top 5 diseases that are mostly cured are:

1. Breath system disease
2. Sudden Diarrhea
3. High Blood Pressure
4. Diabetes
5. Throat Inflammation

Source : Pattaya Inter Hospital

February 2018

The Hospital under Pattaya City

1. **Pattaya City Hospital.** It is located at 261/10 Moo 10 Soi Buakao, Central Pattaya Road, Nongprue, Banglamung, Chonburi 20150. The telephone number is 038-103900

The number of beds 110

Medical staff are:

- Physicians (Government Office) 21 (4 Gov. officers with 20
physicians form Thoburi Hospital)
- Nurses (Government Office) 4 (4 Gov. officers with 79 nurses
form Thoburi Hospital)
- Dentists (Government Officers) 4
- Pharmacists 12 (4 Gov. officers with 8 Pharmacists
form Thoburi Hospital)
- Patient Assistants 132

Number of patients receiving medical treatment in 2017 are as follows:

- In patients 7,449
- Out patients 266,475
- Frequency of visits 282,232 times
- Accidents 16,038 cases : year

Top 5 diseases that are mostly cured are:

1. Chronic Renal Failure
2. High Blood Pressure
3. Flu

4. Diabetes
5. Throat Inflammation

Source : Pattaya City Hospital

February 2018

Public Health Center Service. It is located on Soi Buakhao, Central Pattaya Road. The telephone number is 038-420826. The physicians and nurses are the same ones as Pattaya City Hospital.

Basic Community Public Health Center of Pattaya City

There are 29 Basic Community Public Health Centers of Pattaya City as follows:

1. Tappraya Basic Community Public Health Center
2. Basic Community Public Health Center at Naklua Old Market 1
3. Basic Community Public Health Center at Naklua Old Market 2
4. Roilang Basic Community Public Health Center
5. Teppasit Basic Community Public Health Center
6. Torng-or Priest House Basic Community Public Health Center
7. Ronmaikheed Basic Community Public Health Center
8. Wat Tamsamakkee Basic Community Public Health Center
9. Central Pattaya 402 Basic Community Public Health Center
10. Wat Bunkanjanararm Basic Community Public Health Center
11. Basic Community Public Health Center atKorpai Community 1
12. Basic Community Public Health Center at Korpai Community 2
13. Basic Community Public Health Center at Arunotai Community 1
14. Basic Community Public Health Center at Arunotai Community 2
15. Laemrachawet Basic Community Public Health Center
16. Basic Community Public Health Center at Norngyai Community 1
17. Basic Community Public Health Center at Norngyai Community 2
18. Chumsai Community Basic Community Public Health Center
19. RungruengBasic Community Public Health Center
20. Watpoe Basic Community Public Health Center
21. Kratinglai Basic Community Public Health Center

22. Norngpankae Basic Community Public Health Center
23. Huatoong Basic Community Public Health Center
24. Rungland Basic Community Public Health Center
25. Kaotalo Basic Community Public Health Center
26. Bongkot Basic Community Public Health Center
27. 5 Tanwa (5 December) Basic Community Public Health Center
28. Wat Chaimonkol Basic Community Public Health Center
29. Koa Larn Basic Community Public Health Center

- **Public Health Volunteers : 280 volunteers**

There are 29 Basic Community Public Health Centers of Pattaya City and there are also public health volunteers in every community. There is a management of mobile service of public health services. However, this service is not sufficient to serve the people's desires as there are four times of unregistered population more than registered ones moving into the city to earn their livings.

Source : Office of Public Health, Pattaya City

February 2018

- Clinic. There are 290 clinics which are:
 - 143 Medical Clinics
 - 109 Dentists
 - 380 of others
- Drugstore. There are 465 drugstores which are :
 - 417 Modern medicine stores
 - 18 Traditional medicine stores
 - 5 producers of traditional medicine
 - 25 ready-packed modern medicine stores
- 38 Veterinarian Clinics
- 6 Animal Hospitals

Source : Public Health Office of Banglamung District and
Banglamung Livestock Office

February 2018

Pattaya City Hospital

It is located at 261/10 Moo 10 Soi Buakao, Nongprue, Banglamung, Chonburi 20150. The telephone number is 038-103900.

Due to the sharp increasing number of the population together with tourists, Pattaya City has to provide sufficient public health services to support needs of those. Moreover, there is only one government hospital and some public health centers in the area. This is not enough to service local people and tourists. Even though there are some nearby government hospital; Somdej Na Siracha, Siracha District and in Sattahip District, it is quite far to go especially at the critical moment. There are 500,00 people and 5 million tourists that Pattaya City must give and account on looking after them. Hence, there is the establishment of the hospital that can provide 500 beds to patients and help them to save their expenses for not going to private hospitals.

Pattaya City takes an account on this problem and realizes the necessity of taking care of people's health in the area. This also brings Pattaya city to achieve the administration of the 9th strategy focusing on health and environment aiming to make local people be well-protected including responding for 14 urgent policies which makes Pattaya City to be a pleasant city. According to "Doctor House Visit Project and Pattaya City Hospital with 20,000 beds, Pattaya City has built Pattaya City Hospital with 110 beds as a government hospital with service standard to serve people with medical care and health care since 2012. This hospital aims to take care of people's health and protect diseases efficiently servicing from a primary care to a secondary care all kinds of people.

Vision

"Pattaya City Hospital cares of services provided by special physicians with full modern technology and worth paying within 2017"

Philosophy

“Quality, Standard, Ethic and Moral”

Mission

“Fantastic servicing medical care, creating service users’ satisfaction by a group of moral personnel and response to society together with excellent academics and continuous development”

Departments of Service

In accordance with the potential of thorough service covering looking after people and tourists’ health, Pattaya City Hospital has operated various departments to serve curing as follows:

- Emergency Department
- Out-patient Department
- In-patient Department
- Intensive Care Unit
- Internal Medicine Department
- Pediatric Department
- **Obstertrics Gynecology (OB/GYN)**
- General Surgery Department
- Dental Enter
- Rehabilitation Department

Koa Larn Health Promotion Hospital

Vision

“Care of curing, well-serviced and quality of transfer”

Mission

- Looking after and take care of health and accident efficiently
- Building up good health path to protect diseases and support last long good health
- Developing public health personnel to have quality in cooperative jobs
- Developing organization and administrative system, and standard health academic

Goals

- Making a network and cooperation in looking after health and transferring system continually and sustainably.
- Becoming a standard organization and being acceptable internationally.
- People and tourists are satisfied and reliable on the standard services of EMS towards bed to bed.
- Building up community health system following sufficiency economy.
- People have proper health behaviours and have a good way of disease protection and the rate of illness reduces.

8. Public Danger Release and Protection

Land Public Danger and Fire Protection

✘ There are 3 fire stations with 87 firemen as follows:

- Naklua Area Fire Station. The responsible area is from Kratinglai Canal to North Pattaya Road.
- Pattaya Area Fire Station. The responsible area is from North Pattaya Road to Teprasit Road.
- Jomtian Area Fire Station. The responsible area is from Teprasit Road to the end of Pattaya City border at Najomtian.

- ✘ The statistic of fire from 1st January – 31th December 2017 : 53 times
- ✘ Numbers of fire protection volunteers of Pattaya City : 1,488 volunteers
- ✘ Numbers of training trading places on Fire : 183 times

Source : Section of Land Danger Protection
February 2018

The Mission to Protect Sea and Coastal Dangers

The mission is to protect, rescue in the sea, seek for ones facing dangers in the sea including security guard to help both Thai and foreign tourists who swim in the area and face dangers. The other missions is to assist service tour boat owners in the water area of Pattaya City as Pattaya Beach, Jomtian Beach Wong-amart Beach, and the area of Koa Larn. The first aids is also provided to tourists having injury from sharp items or all kinds of sea animals in the area.

There are 5 sea and coastal danger rescue centers as follows:

1. Sea and Coastal Danger Rescue Center at Najomtian area
2. Sea and Coastal Danger Rescue Center at Pattaya area
3. Sea and Coastal Danger Rescue Center at Wong-amart area
4. Sea and Coastal Danger Rescue Center at Sukawadee area
5. Sea and Coastal Danger Rescue Center at Kratinglai area

There are 34 officers working in Sea Danger Protection Section.

Source : Sea Danger Protection Section of Pattaya City

Natural Resources and Environment

1. Water Resources

There are not any natural water resources in Pattaya City, so it is necessary to depend on the rainfall and reservoirs in Banglamung District and from man-made reservoir for consumption, agriculture and industry. There are water reservoirs as follows:

- Huaykhunjit Reservoir at Takiantia Sub-district
- Marbprachun Reservoir at Pong Sub-district
- Charknork Reservoir at Huay Yai Sub-district
- Klangdong Reservoir at Takiantia Sub-district

There are 4 canals in Pattaya City as follows:

- Nokyarng Canal
- Peekclub Canal
- Naklua Canal
- South Pattaya Canal

2. Forest

There are 9 National Reserved Forests in Chonburi with the area of 906,396 rai which are Banlamung Reserved Forest with the area of 103,075 rai, Kao Kiew Reserved Forest with the area of 55,625 rai, Tarboonmee – Bortong Reaeerved Forest with the area of 170,625 rai, Klongtakian Reserved Forest with the area of 378,750 rai, Daeng and Chumchon Klang Reserved Forest with the area of 160,625 rai, Kao Chompoo Reserved Forest with the area of 28,589 rai, Kaopu Reserved Forest with the area of 5,482 rai, Kao Hindrad and Kaopai Reserved Forest with the area of 1,500 rai. These reserved forests are categorized into 3 types.

1. Reserved forest area (Zone C) with the area of 196,864 rai
2. Economical forest area (Zone B) with the area of 705,182 rai
3. Forest suitable for agriculture (Zone A) with the area of 4,350 rai.

3. Coastal Natural Resources

* **Coral reefs.** Coral reefs are found in 2 places in Chonburi; at the Group of Koa Larn, Pattaya City and Koa Samaesarn in Sattahip where amateur divers like to practice diving there.

* **Sea grass resource.** The important places where sea grass resources are found are the area of Koa Kram and Koa Pra in Sattahip Bay area. The three kinds of sea grass found are *Halophila decipiens*, *Halophila Minor* and *Ruppia Mritime*.

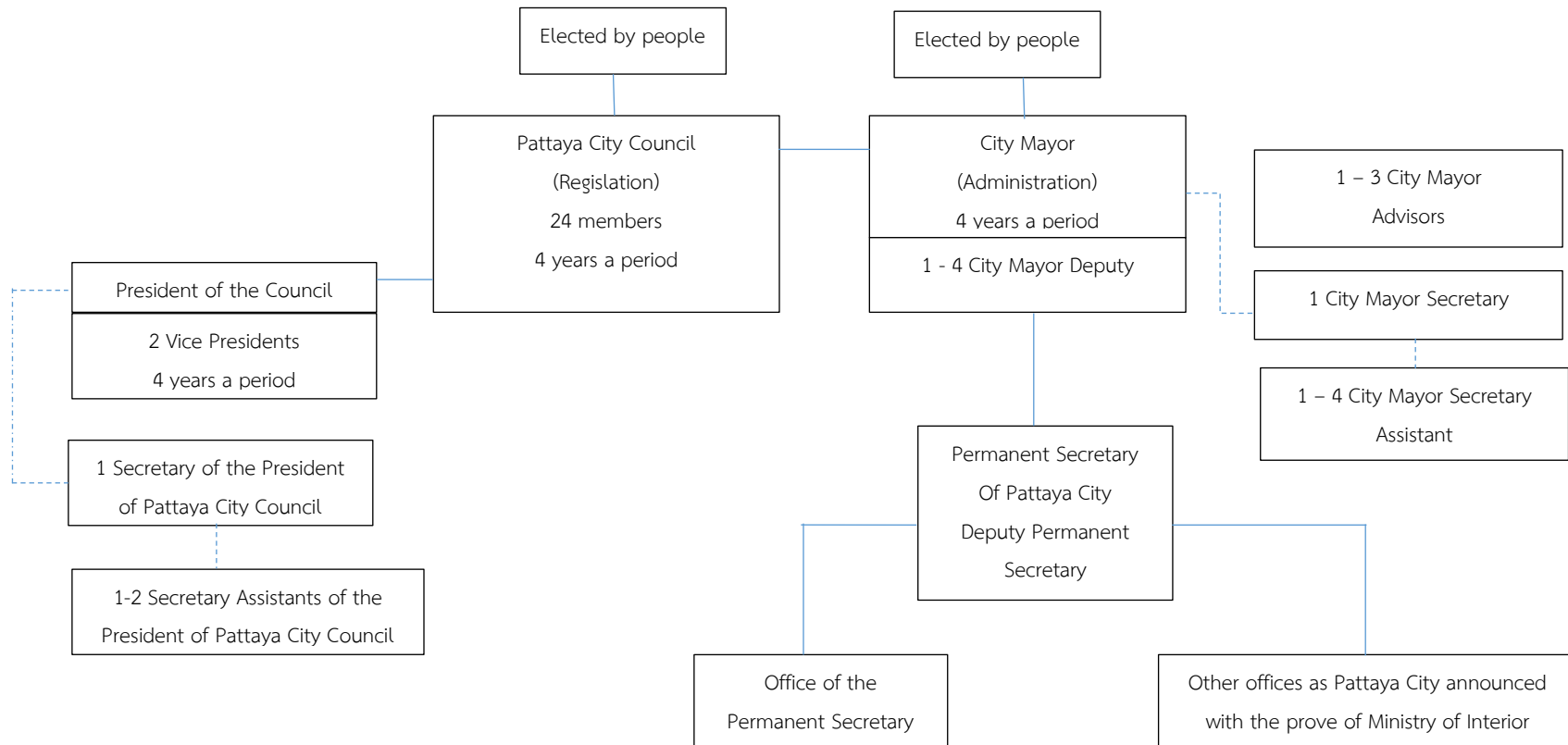
5. Environment Condition

Condition of Water/Air

Most of water resources in Pattaya city are seawater. Generally, the standard criteria of a seawater resource suitable for swimming and water sports must contain less bacteria than 1,000 MPN / 100 mgs. The seawater resources of Pattaya City are divided into 4 areas that are Jomtian area, Pattaya area, Naklua area and Koa Larn area. The quality of the seawater in these areas are in standard criteria.

Politic and Administration

Structure of Pattaya City Administration by the Pattaya City Administration Act 1999





Politic and Administration Aspect

1. The Structure and Authority in Administration

Following the Act of Pattaya City Administration 1999 and the second Improved Act 2009

✘ The Establishment of Pattaya City ✘

Pattaya City is a Established under Section 7 as a local government unit with the area as appearing before the proclamation of the Act and the status of Pattaya City is as a corporate and the correction of the city border must be declared as a decree.

✘ The Administration of Pattaya City ✘

According to the Administration of Pattaya City Section 8 , the administration of Pattaya City are as follows:

1. Pattaya City council
2. Pattaya City Mayor

✘ Pattaya City council ✘

Pattaya city council consists of twenty-four members, elected by the people who have a right to vote (one with the age from 18 years old) in an election in Pattaya. The period of Pattaya City council lasts four years beginning from the date of the election. When the office becomes vacant because of the expiration of the term of Pattaya City council or the dissolution of Pattaya City council or there is a dissolution of Pattaya City council in accordance with Section 19 paragraph three, an election must be held within forty-five days from the date of the expiration of the federation of Pattaya City Council or the date of the dissolution of Pattaya City Council, depending on what case is.

When the member position becomes vacant, the election to substitute the vacant position within forty five days of the date on which the vacancy is, except for the period of Pattaya city council remaining less than one hundred and eighty days. The new member elected to substitute the vacant position will last long as the present period of Pattaya City left. In case of members of Pattaya City council are vacant more than the full number of all members, the Provincial Governor will report to the Minister of Ministry of Interior to consider the dissolution of Pattaya City Council.

One of elected members of the Council of Pattaya City will be elected to be the President of the Council, and other two will be Vice Presidents of the Council of Pattaya City. This will be at the first period of the meeting and then proposing the elected members for the Provincial Governor to appoint.

The President of the Council may appoint a council secretary and a council secretary assistant to assist doing all council jobs, but not exceed the numbers of Pattaya Vice Presidents of the council.

✠ Pattaya City Mayor ✠

Pattaya City Mayor is directly elected by the people in an election area of Pattaya City. Pattaya City Mayor period will be a four-year term beginning from the date of being elected and will be able to hold the position not more than two consecutive terms. In case of the vacancy of Pattaya City Mayor, the election must be held within forty five days from the date of the official vacancy. The previous Mayor of Pattaya city must transfer all responsibilities to the new Mayor within seven days beginning from the date of the result of the election of Pattaya City Mayor announced.

Pattaya City Mayor may appoint Deputy Pattaya City Mayor, but not more than four people to assist doing jobs as Pattaya City Mayor assigns.

The Duties of Pattaya City Mayor

Pattaya City Mayor must follow the duties as follows:

1. Defining the policy and be responsible for the administration of the affairs of Pattaya City, that is in compliance with the laws and ordinance policy.
2. Giving permission and approve all Pattaya City official affairs.
3. Appointing and dismissing Deputy Pattaya City Mayor, Pattaya City secretary, Pattaya city assistant secretary, the chairman of the advisory of Pattaya City Mayor or board of advisors.
4. Regulating Pattaya City rules to keep Pattaya City in order.
5. Performing other duties as assigned by the Cabinet, the Prime Minister, the Minister or the Provincial Governor or follow the missions prescribed by the law of the Mayor of Pattaya City or the Municipal Council Acts.

Pattaya City Mayor may appoint Pattaya City Mayor secretary and Pattaya City Mayor secretary assistant, but not more than the numbers of Deputy Pattaya City Mayor and may appoint the expert to be the president of the advisory unit and advisory unit members, but not exceed 5 members to assist doing jobs as Pattaya City Mayor assigns.

◀ Pattaya City Administration Regulations ▶

Pattaya City Mayor controls and takes responsibility for the administration of the affairs of Pattaya City and commands all Pattaya City staff and employees.

Pattaya City Administration is divided into sections as follows:

1. Office of the Permanent Secretary of Pattaya City.
2. Other sectors as Pattaya City Mayor has announced under the approval of the Ministry of Interior.

◀ Pattaya City Permanent Secretary ▶

Pattaya City Permanent Secretary is the person who commands and controls all of Pattaya City employees who are in lower levels than Pattaya City Mayor and permanent officials of Pattaya City in accordance with the policies and other duties as specified by the law or assigned by Pattaya City Mayor.

According to the duty performance, Pattaya City Mayor, Deputy Pattaya City Mayor and Pattaya City Officials are the officials under the code of law.

◀ The Authority of Pattaya City ▶

Following section 62 subjecting to the provisions of the law, Pattaya City obtains the authority to proceed in Pattaya City area as follows:

1. Keeping peace and calmness.
2. Supporting the promotion and preservation of the quality of the environment and natural resources.
3. Protecting and maintaining public properties.
4. Managing city planning and controlling all constructions.
5. Managing housing and improving slum.
6. Managing and controlling traffic.
7. Keeping the city clean and tidy.
8. Managing waste and sewage and waste water treatment.

9. Providing clean water or the water supply system.
10. Managing controlling of a market place, harbors, and car parks.
11. Controlling hygiene and safety of public health focusing on food services, cleanness of theatre and other entertainment spots.
12. Controlling and promoting tourism.
13. Maintaining arts, custom, local wisdom and good cultures of locality.
14. Performing other functions as prescribed by the laws of the municipality or of Pattaya City.

★ Plan and Step of Decentralization Following Act ★

Section 16

According to Decentralization Act, Section 16 local government units must perform following functions including Pattaya City:

1. Managing one own local development plan.
2. Providing and maintaining transportation on land, water and floodway.
 3. Providing and controlling market places, harbor, ferry pier and car park.
 4. Building infrastructure and other constructions.
 5. Providing public facilities.
 6. Managing occupation promotion and training.
 7. Commercializing and investment promoting.
 8. Promoting tourism.
 9. Managing education.
 10. Managing social welfare and developing the quality of life of children, women, elderly and the disables.
11. Maintaining arts, custom, local wisdom and good culture of locality.
12. Improving slums and managing housing.
13. Providing and maintaining recreational areas.
14. Promoting sports.
15. Promoting democracy, equity and rights and liberties of the people.
16. Promoting the participation of local people to develop local area.
17. Keeping the area clean and tidy.

18. Managing waste and sewage and waste water treatment.
19. Caring of public health, family health and providing medical treatment.
20. Providing and controlling the cemetery and funeral areas.
21. Controlling animal farms.
22. Providing and Controlling slaughter houses.
23. Keeping hygiene, tidiness and sanitation of theatres and public places.
24. Managing and maintaining the utilization of forests, land, natural resources and the environment.
25. Managing city planning.
26. Managing transportation and traffic engineering.
27. Looking after public places.
28. Controlling building sites.
29. Protecting and relieving Public hazards.
30. Keeping peace and calmness including supporting the prevention of security of life and property damage.
31. Providing any other activities that are beneficial to the local people in accordance with the board declaration.

Official Offices of Pattaya City

❖ Office of the Permanent Secretary

This office is responsible for general official affairs of Pattaya City, cooperate with others, house registering and citizen ID, the jobs as Pattaya City secretary and official administrators, Pattaya City Council job, solving problems as requested aggressively, keeping peace, protecting drugs and disasters, protecting dangers and fire, collecting officers, cooperating with other government sectors and private sectors, assisting victims of sea and land dangers, promoting the center of personnel development, and perform other duties not mentioned and specified in the declared offices and other duties as requested.

❖ Office of Strategic Plan and Budget

This office is responsible for setting up policy, goals, making and developing finance, socio-politic, administration strategies, infrastructure, environment and natural resources, coordinating and writing plans for official performing, determining directions and regulations of budget, doing research for job development and people servicing, promoting economic and society including related jobs and assigned jobs.

❖ Office of Finance

This office is responsible for fiscal and finance, accounting of Pattaya City, receiving and spending the supported budget from the central government on projects, dealing with fringe benefits and rights of Pattaya City officers, checking of receiving and spending pensions of Pattaya City officers and permanent employees, studying, analyzing and making rules and method for collecting every kind of revenue, making estimated yearly revenues, informing calculating taxes, receiving taxes of building and land, local area maintained tax, sign tax, fees and other revenues of Pattaya City. Besides, this office also calls for unpaid taxed, receive the request for reduce or abandon taxes, complain of tax paying or delaying of paying taxes, confiscate and sell out properties of unpaid tax person, follow and accelerate property hiring money, look after the channel of making incomes of Pattaya City properties, collecting fee for car parking, certify building and construction. Additionally, this office has to study and analyze the ways to obtain more supportive budget than the government used to pay with suitability and agreeability and do other duties as assigned.

❖ Office of Technical / Civil Work

This office is responsible for issuing license for controlling buildings and constructions, industry and power, drafting and controlling construction, checking and analyzing construction material, planning of the city plan, looking after and protecting public area, arrangement and right of land, maintaining public utilities, buildings and construction, promoting having basic public utility to service people and tourists thoroughly like water work, electricity and etc., trafficking and transporting to link cargo transportation and touring including performing other related and assigned duties.

❖ Office of Public Health

This office is responsible for supporting services for people in the aspects of curing diseases, controlling and protecting diseases, building up good health and developing the idea of people towards behaviors and awareness of good health, performing activities based on the public health laws and related laws, developing knowledge and form of public health service system, food nutrition, environment, distributing knowledge and technology of promoting good health, protecting diseases, controlling public health and environment in the buildings, places and communities and behaviors of looking after health including performing other related and assigned duties.

❖ Office of Education

This office is responsible for administrating and developing of both formal and non-formal education and independent education as managing kindergarten education, primary education, secondary education and vocational education. Others functions are academic administration, school jobs, educational supervising, students' activities, education for young children, extension of education, library, museum, and educational network jobs, jobs related to religions, maintaining national traditions and culture for education, responsibility to jobs dealing with the king, religion and nation, sports and leisure jobs for education, activities for children in and outside schools including performing other related and assigned duties.

❖ Office of Sanitary Mechanic

This office is responsible for managing protecting and draining water, protecting flood and draining water from the flooded area, designing and projecting draining water systems, controlling the construction protecting flood, water erosion, pipe system, water pumping system, maintaining machine and factory, taking the request of maintaining draining water system, managing of quality of water, taking responsibility upon developing waste water draining system, waste water treatment, analyzing quality of water and controlling pollution, managing problems of water pollution, preserving water resources, checking the quality of drained water from commercial buildings that cause water pollution to be under laws including performing other related and assigned duties.

❖ Office of Social Development

This office is responsible for promoting and developing sustainability of life of people, creating justice and equity in the society in living, promoting and protecting right of person, develop potential of people, promoting the participation of people, promoting and developing family institution, studying and analyzing ways to develop society including performing other related and assigned duties.

❖ Office of Environment

This office is responsible for managing environment, studying, analyzing and doing the research to solve, improve, reactivate, promote and encourage to keep environment quality, following checking the quality of environment, arrange the report of environment situation, controlling quality of air, noise, vehicles, managing of dangerous waste disposal, looking after natural resources, green zone, utilizing clean energy that does not destroy environment including performing other related and assigned duties.

❖ Office of Procurement and Property

This office is responsible for supplying kinds of material for jobs, Hiring of construction work and maintaining material, equipment and constructions to support the jobs of others, controlling transferring of assets, registering, extending registering and disposing assets, developing material management, controlling and arranging making account of material and assets, providing advice about laws of purchasing and hiring and performing related duties.

❖ Office of Tourism Promotion

This office is responsible for developing tourism to be tourist attraction of the country, region and world class, focusing adding value of Pattaya economic and the whole economic of the country, planning and analyzing risk factors, developing and promoting new type of tourism to draw tourists' interest, organizing tourism festival, developing tourist attractions and sports for tourism, organizing conference, exhibition and national and international recreation level, promoting art and culture for tourism, creating channel for exchanging and promulgating culture within and outside the country, creating new style tourism, designing electronic media and moving media to promote Pattaya tourism, promoting making documentary and movies and modern channel to promote tourism and making ease

for foreigners to perceive this as it will create the fame of the country and making incomes to the country.

❖ **Division of Personnel**

This division is responsible for Pattaya City personnel administration, Pattaya City teachers, educational personnel, permanent employees, hired personnel dealing with recruiting, staffing and putting personnel into jobs, registering of personnel profile, officers' pension and promotion, developing human resources, dealing with discipline and invocation, handling secretary job of Pattaya Officer Committee including performing other related and assigned duties.

❖ **Internal Audition Unit**

This work unit is responsible for checking the administrating of fiscal and finance, managing of material and assets including other administration to follow policy, regulations, laws, orders and the agreement of the cabinet, examining accounts, documents and evidence for accounting, checking the system of protecting and saving all properties, and the utilization of properties worthily, efficiently, and effectively including making reports of checking and suggestion to the administrator and other related and assigned duties.

❖ **Section of Laws**

This section is responsible for giving advice dealing with regulations, laws of Pattaya City and other offices, coordinating with the Attorney General Office for being the representative of Pattaya City in all civil cases in every courts, dealing with the cases in administrative court, considering the case of violation, considering the case of tax invocation, enforcing administrative cases following the Act of procedure to do in official administrative cases 2006, considering the contracts of Pattaya City, suing the case of bankrupt, enforcing the case and seizing the property, considering the legislation of laws, regulations, announcement and command of Pattaya City, considering and giving advice to other offices and performing other related duties and assigned duties.

❖ **Pattaya City Office, Koa Larn Branch**

This office is responsible for the job of Pattaya City Office, Koa Larn Branch in the responsibility of the Permanent Secretary of Pattaya City focusing on general administration

jobs. This office also perform the job of safety keeping, civil job and sanitary job. The main offices of Pattaya City may share some parts of their jobs for Koa Larn Branch Office to do including performing other related and assigned duties.

❖ Koa Larn and the Administration of Pattaya City Koa Larn Branch ❖

General Feature

Koa Larn group comprises of Koa Larn, Kao Krok, and Koa Sark located in the west of Pattaya City. (Koa Larn is located at Moo 7, Naklua Sub-district). Koa Larn can be seen from Pattaya Beach clearly as it is 7.5 kilometers far from the shore and it occupies the area of 4.07 square kilometers.

It takes 15 minutes to go to Koa Larn by a speed boat and it takes 45 minutes by a normal boat. Koa Larn was formerly known among tourists as the coral islands as there are a lot of various kinds of sea corals.

Koa Larn is located at the latitude 12 degree 56' and the longitude 100 degree and 47'. The longest part is about 4.65 kilometers and the widest is 2.15 kilometers and 90% of the area is mountainous.

Famous Tourist Attractions on Koa Larn

1) Tawaen Beach. It is at the north of the island about 750 meters long with its natural beauty of white sand and clear blue water. There are coral lines at both ends of the beach.

2) Sangwarn Beach. It is a small beach located near Tawaen Beach with the length of 150 meters. The beauty of the beach is like Tawaen Beach but it is quieter, so it is famous for European sun bathers. The most beautiful time of this beach is during December to April as the sea is calm and suitable for seeing corals.

3) Tong Luang Beach. It is a small and quiet beach suitable for tourists who like privacy. The main activity of this beach is snorkeling seeing the corals. There are glass bottom boats for seeing corals if the tourists do not like walking or snorkeling to see the corals.

4) Tian Beach. This is the second beautiful beach with the length of 500 meters in the west of the island. People move from Tar Waen Beach to this beach when there is a monsoon season.

5) Samae Beach. It is located at the southwest of Koa Larn with the length of 350 meters. The beach is quiet and beautiful suitable for a rest and swimming. At this moment, the land scape is improved including planting trees and the convenient walkway. There are also standard restaurants. Tourists can visit the building saving power by using a solar system and the nearby area is the windmill farm producing electricity which is interested and visited by private and government sectors.

6) Nuan Beach, It is located in the south of Koa Larn with the length of 250 meters, but it is occupied by a private owner. Tourists can see beautiful and perfect corals as there are not many tourists visit this place.

7) Tar Yai Beach. It is not a big beach with the length of 100 meters, but it is quiet and shading with white sand, clear water and big and small stones like natural scripture.

8) Koa Krok. It is a small island located in the south of Pattaya City 8 kilometers from Pattaya beach or northwest of Koa Larn. The longest of the island is 550 meters with 150 meters width. There is only one beach on this island.

9) Koa Sark. It is located in the west of Pattaya City, 8 kilometers far from Pattaya shore. There are two beaches with white sand on this island. There are also accommodation and restaurants there, too.

Land Transportation on Koa Larn

Type	Route	Number	Price
1. Sorng Taew (Mini bus)	- Nar Baan – Tawean Beach - Nar Baan – Samae, Tian Beach - Nar Baan – Nuan Beach - Tawaen Beach – Samae Beach - Tian Beach - Tawaen Beach – Nuan Beach	33	Start from 40 Baht : person and increase by the distance
2. Motorcycle	On demands	120	Start from 20 baht person and increase by the distance

Time Table of Ferry to Koa Larn

Depart from Pattaya (Balihi Cape)		Depart from Loa Larn (Narbarn Pier)	
Departure time	07.00 a.m.	Departure time	06.30 a.m.
	08.00 a.m.		07.30 a.m.
	09.00 a.m.		09.30 a.m.
	10.00 a.m.		12.00 p.m.
	11.00 a.m.		02.00 p.m.
	12.00 p.m.		03.30 p.m.
	01.00 p.m.		05.00 p.m.
	02.00 p.m.		06.00 p.m.
	03.30 p.m.	<u>Depart from Hard Tawaen Pier</u>	
	05.00 p.m.		01.00 p.m.
	06.30 p.m.		02.00 p.m.
			03.00 p.m.
			04.00 p.m.
			05.00 p.m.

Statistic of Koa Larn Population from 2015 – 2017

Population	2014	2015	2016	Increasing Population	Increase/ Decrease (%)
Total	2,854	2,869	2,912	46	+1.48
Male	1,413	1,428	1,438	10	+0.70
Female	1,441	1,441	1,474	33	+2.24
Households	627	625	619	(-6)	(-0.97)

Source : Office of Local Register of Pattaya City, February 2018

Information of Accommodation and Other Business on Koa Larn

Business / Service	Numbers
1. Daily accommodation business owners	140 owners/1,300 rooms
2. Monthly accommodation business owners	13 owners/150 rooms
3. Restaurants	47
4. Public telephone boxes	3
5. Telephone signal posts	4

Source : Pattaya City Office, Koa Larn Branch, June 2018

**Number of Pattaya City Officers, Permanent Employees and Hire Personnel
Information in March 2018**

No	Office	General			Academic				Facilitate Local			Administrate Local			Total Officers	Permanent Employees	Hired Personnel	Grand Total Staff
		Action	Skill	Expert	Action	Skill	Expert	Special Expert	L	M	H	L	M	H				
1	Permanent Secretary Off.	18	27	-	11	6	-	-	7	3	-	-	1	3	76	28	321	425
2	Strategic Plan and Budget	2	3	1	6	5	-	-	5	-	-	-	-	-	24	1	15	40
3	Finance Off.	9	9	-	7	5	-	-	6	2	-	-	-	-	36	3	37	76
4	Technical /Civil Work Off.	8	14	7	8	13	-	-	12	2	1	-	-	-	65	24	142	231
5	Public Health Off.	2	3	-	19	25	3	-	9	5	1	-	-	-	67	4	65	136
6	Education Office	4	2	-	9	7	-	-	4	2	-	-	-	2	30	-	31	61
7	Sanitation Works Technician Off.	2	7	2	2	1	-	-	4	1	-	-	-	-	19	12	76	107
8	Social Development Off.	2	1	-	1	4	-	-	2	2	1	-	-	-	15	-	19	34
9	Environment Off.	2	1	-	2	1	-	-	2	-	1	-	-	-	9	52	251	312
10	Procurement and Property Off	5	5	-	2	-	-	-	3	1	-	-	-	-	16	-	9	25
11	Tourism Promotion Off.	-	1	-	4	6	-	-	2	2	1	-	-	-	16	-	30	46
12	Personnel Division	-	3	-	10	4	-	-	3	1	-	-	-	-	21	-	9	30
13	Laws Section	1	-	-	4	7	-	-	-	-	-	-	-	-	12	-	7	19
14	Interior Audit Sub Division	-	-	-	-	1	-	-	-	-	-	-	-	-	1	-	4	5
15	Koa Lam Branch	-	3	1	5	-	-	-	4	-	-	-	-	-	13	2	91	106
	Total Staff	53	80	11	94	84	3	-	62	22	5	-	1	5	420	126	1,107	1,653

Source : Personnel Division, Pattaya City : March 2018

Number of Teachers Under Pattaya City

Classified by Academic Status

Survey in May 2017

School	Number of Teachers Under Pattaya City Classified by Academic Status					Total
	Teacher	Kor Sor	Kor Sor	Kor Sor	Kor Sor	
	Assistant	1	2	3	4	
Muang Pattaya 1	-	8	8	10	-	26
Muang Pattaya 2	4	11	10	13	4	42
Muang Pattaya 3	3	16	18	20	1	58
Muang Pattaya 4	2	10	16	4	-	32
Muang Pattaya 5	6	12	17	15	1	51
Muang Pattaya 6	3	14	14	9	-	40
Muang Pattaya 7	6	14	29	20	1	70
Muang Pattaya 8	5	13	29	28	1	76
Muang Pattaya 9	9	15	15	25	1	65
Muang Pattaya 10	5	6	4	3	-	18
Muang Pattaya 11	1	10	13	10	2	36
Total	44	129	173	157	11	514

Source : Personnel Division, Pattaya City :

June 2018